

Ersatzteilliste

(1.186-130.0) KM 150/500 R Bp Pack

Inhaltsverzeichnis

| | |
|--|----|
| KM 150/500 R Bp Pack (1.186-130.0) | 3 |
| ETL KM 150/500 Bp Pack (5.972-016.0) | 4 |
| 10 Rahmen | 5 |
| 11 Chassis | 6 |
| 12 Rumpfgeraet Stossfaenger | 10 |
| 20 Cockpit | 14 |
| 30 Lenkeinheit | 17 |
| 40 Raeder vorne | 19 |
| 50 Kehrwalze | 22 |
| 60 Filterkasten | 25 |
| 70 Grobschmutzklappe | 28 |
| 80 Geblaese | 31 |
| 90 Elektromotor Einzelteile | 33 |
| 37 Oelfilter (6.987-233.0) | 38 |
| 46 Verteilerblock 3-teilig (6.987-346.0) | 40 |
| 100 Seitenbesen | 42 |
| 110 Hydraulik-Schema | 44 |
| 67 Verteilerblock 3-teilig (6.987-346.0) | 49 |
| 69 Oelfilter (6.987-233.0) | 51 |
| 120 Schutzdach KM 150/500 R / KM 170/600 R (2.851-686.0) | 53 |
| 130 Servicekit Hydraulik KM Industrial | 56 |

KM 150/500 R Bp Pack (1.186-130.0)

| POS | Artikelnr. | Beschreibung | Anzahl | Einheit |
|------------|-------------------|------------------------|---------------|----------------|
| 0 | 5.972-016.0 | ETL KM 150/500 Bp Pack | 1.000 | ST |

ETL KM 150/500 Bp Pack (5.972-016.0)

| POS | Artikelnr. | Beschreibung | Anzahl | Einheit |
|-----|-------------|--|--------|---------|
| 10 | | Rahmen | 1.000 | ST |
| 20 | | Cockpit | 1.000 | ST |
| 30 | | Lenkeinheit | 1.000 | ST |
| 40 | | Raeder vorne | 1.000 | ST |
| 50 | | Kehrwalze | 1.000 | ST |
| 60 | | Filterkasten | 1.000 | ST |
| 70 | | Grobschmutzklappe | 1.000 | ST |
| 80 | | Geblaese | 1.000 | ST |
| 90 | | Elektromotor Einzelteile | 1.000 | ST |
| 100 | | Seitenbesen | 1.000 | ST |
| 110 | | Hydraulik-Schema | 1.000 | ST |
| 120 | 2.851-686.0 | Schutzdach KM 150/500 R / KM 170/600 R | 1.000 | ST |
| 130 | | Servicekit Hydraulik KM Industrial | 1.000 | ST |

10 Rahmen

| POS | Beschreibung | Anzahl | Einheit |
|------------|--------------------------|---------------|----------------|
| 11 | Chassis | 1.000 | ST |
| 12 | Rumpfgeraet Stossfaenger | 1.000 | ST |

11 Chassis

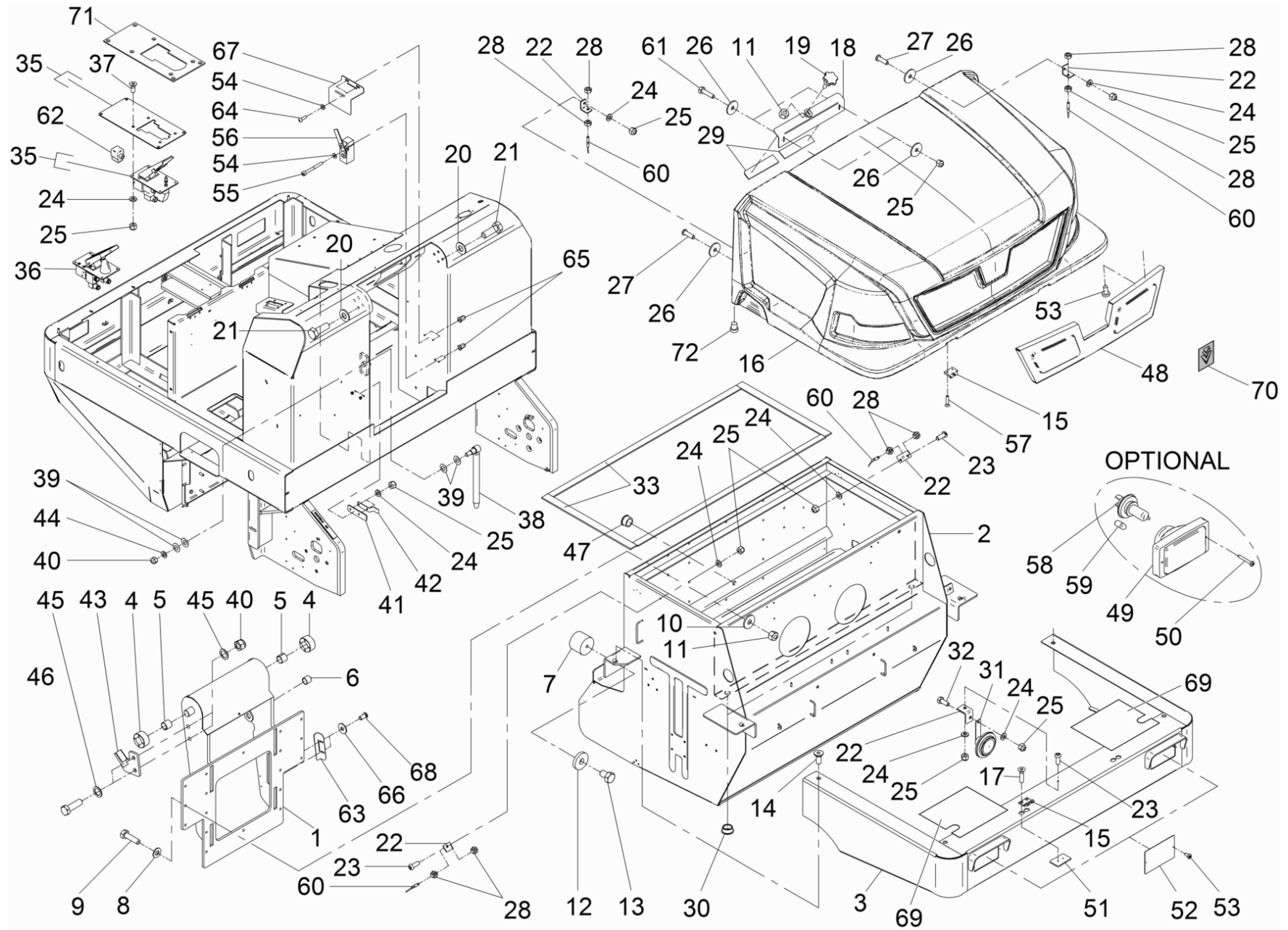
| POS | Artikelnr. | Beschreibung | Anzahl | Einheit | Bemerkung |
|-----|-------------|------------------------------------|--------|---------|-----------|
| 1 | 6.987-867.0 | Rahmen KM 150/500 Bat | 1.000 | ST | |
| 2 | 6.987-656.0 | Abdeckung Saeule | 2.000 | ST | |
| 3 | 6.987-868.0 | Abdeckung hinten | 1.000 | ST | |
| 4 | 6.987-869.0 | Abdeckung Seite | 1.000 | ST | |
| 5 | 6.987-870.0 | Abdeckung Motor | 1.000 | ST | |
| 6 | 6.987-350.0 | Scharnier | 4.000 | ST | |
| 7 | 7.306-090.0 | Schraube M6x16 -8.8-R3R (In6Rd) | 20.000 | ST | |
| 8 | 7.312-276.0 | Scheibe 6 -200HV-A2E ISO7093-1 | 31.000 | ST | |
| 9 | 7.312-045.0 | Scheibe 6-200HV-P4E ISO 7089 | 26.000 | ST | |
| 10 | 7.311-512.0 | 6kt-Mutter M 6-8-A2E ISO 7040 | 17.000 | ST | |
| 11 | 7.312-277.0 | Scheibe 8-200HV-A2E ISO7093-1 | 2.000 | ST | |
| 12 | 7.311-510.0 | 6kt-Mutter M 8-8-A2E ISO 7040 | 8.000 | ST | |
| 13 | 7.312-017.0 | Scheibe 8-A2 ISO 7089 | 21.000 | ST | |
| 14 | 7.306-040.0 | Zyl.Schr. M8x16 -8.8-A2E ISO4762 | 13.000 | ST | |
| 15 | 6.987-871.0 | Blech Sitzkonsole mobil | 1.000 | ST | |
| 16 | 6.987-451.0 | Handlauf | 1.000 | ST | |
| 17 | 6.987-452.0 | Motorhaube | 1.000 | ST | |
| 18 | 7.305-646.0 | Senkschraube M 5x16-A2-70 DIN 7991 | 1.000 | ST | |
| 19 | 7.312-278.0 | Scheibe 5-200HV-A2E ISO7093-1 | 16.000 | ST | |
| 20 | 7.311-421.0 | 6kt-Mutter M 5-04-A2E ISO 10511 | 12.000 | ST | |
| 21 | 7.306-041.0 | Zyl.Schr. M8x20 -8.8-A2E ISO 4762 | 5.000 | ST | |
| 22 | 7.306-041.0 | Zyl.Schr. M8x20 -8.8-A2E ISO 4762 | 22.000 | ST | |
| 23 | 7.306-092.0 | Schraube M6x20-ST- 8.8-R3R (IN6RD) | 6.000 | ST | |
| 25 | 6.987-109.0 | Abdeckkappe | 1.000 | ST | |
| 26 | 6.988-505.0 | Halter Rundumkennleuchte 2111095 | 1.000 | ST | |
| 27 | 7.306-087.0 | Schraube M6x10 -8.8-R3R (In6Rd) | 4.000 | ST | |
| 28 | 6.988-512.0 | Rundumkennleuchte LED 10-100V | 1.000 | ST | |
| 29 | 6.373-988.0 | Sitz | 1.000 | ST | |
| 29 | 6.373-014.0 | Komfortsitz | 1.000 | ST | |
| 30 | 6.987-112.0 | Antirutschmatte | 1.000 | ST | |
| 31 | 7.305-029.0 | Senkschraube M6x10-8.8-A2R (In6Rd) | 2.000 | ST | |
| 32 | 6.987-113.0 | Abdeckkappe | 4.000 | ST | |
| 33 | 6.987-114.0 | Schutzblech | 1.000 | ST | |

11 Chassis

| POS | Artikelnr. | Beschreibung | Anzahl | Einheit | Bemerkung |
|-----|-------------|-------------------------------------|--------|---------|-------------------------|
| 34 | 6.987-115.0 | Scharnier | 4.000 | ST | |
| 35 | 6.987-122.0 | Tuer Kehrwalze rechts | 1.000 | ST | |
| 36 | 6.987-123.0 | Tuer Kehrwalze links | 1.000 | ST | |
| 37 | 7.306-058.0 | Schraube M 4X 12- 8.8-R2R K-IN6RD | 16.000 | ST | |
| 38 | 7.312-001.0 | Scheibe 4 -200HV-A3E ISO 7089 | 14.000 | ST | |
| 39 | 7.311-424.0 | 6kt-Mutter M4 -8-A2E ISO 7040 | 16.000 | ST | |
| 40 | 6.988-798.0 | Hebelverschluss | 2.000 | ST | new main brush door key |
| 40 | 6.987-116.0 | Hebelverschluss | 2.000 | ST | old main brush door key |
| 41 | 6.987-117.0 | Schluessel | 2.000 | ST | old main brush door key |
| 41 | 6.988-799.0 | Schluessel | 2.000 | ST | new main brush door key |
| 42 | 6.987-118.0 | Dichtung Gummi | 1.000 | ST | |
| 43 | 6.987-119.0 | Dichtung Gummi | 1.000 | ST | |
| 44 | 6.987-120.0 | Schmutzklappe links | 1.000 | ST | |
| 45 | 6.987-121.0 | Schmutzklappe rechts | 1.000 | ST | |
| 46 | 6.987-124.0 | Winkel seitlich Kehrwalze | 1.000 | ST | |
| 47 | 7.310-002.0 | Fluegelmutter M 6-GT-A2E DIN 315 | 12.000 | ST | |
| 48 | 6.987-125.0 | Winkel Gummilippe | 1.000 | ST | |
| 49 | 6.987-126.0 | Winkel Gummilippe | 1.000 | ST | |
| 50 | 6.987-127.0 | Gummilippe | 1.000 | ST | |
| 51 | 7.311-004.0 | 6kt-Mutter M8 -8-A3E ISO 4032 | 6.000 | ST | |
| 52 | 6.987-132.0 | Verriegelung Haube Motor | 2.000 | ST | |
| 53 | 6.987-133.0 | Stuetze Haube | 1.000 | ST | |
| 54 | 7.316-336.0 | Splint 2x16-St-A2E ISO 1234 | 2.000 | ST | |
| 55 | 6.987-134.0 | Leiste Befestigung Gummi | 2.000 | ST | |
| 56 | 7.304-395.0 | 6kt-Schraube M8x16-8.8-A2E ISO 4017 | 6.000 | ST | |
| 57 | 6.987-029.0 | Buchse | 1.000 | ST | |
| 58 | 6.987-135.0 | Gabel Hubzylinder | 1.000 | ST | |
| 59 | 7.311-019.0 | 6kt-Mutter M20X1,5 -A4-035 ISO 8675 | 1.000 | ST | |
| 60 | 6.987-136.0 | Bolzen | 2.000 | ST | |
| 61 | 6.987-137.0 | Scheibe | 4.000 | ST | |
| 62 | 6.313-004.0 | Federstecker 4,0 | 4.000 | ST | |
| 63 | 6.987-404.0 | Gummimatte | 1.000 | ST | |
| 64 | 6.987-139.0 | Wartungsklappe | 1.000 | ST | |

11 Chassis

| POS | Artikelnr. | Beschreibung | Anzahl | Einheit | Bemerkung |
|------------|-------------------|--|---------------|----------------|------------------|
| 65 | 6.987-963.0 | Rueckleuchte rot | 2.000 | ST | |
| 66 | 6.987-141.0 | Halter Rueckleuchte | 2.000 | ST | |
| 67 | 7.313-002.0 | Federring B 5-FSt-A3E DIN 127 | 4.000 | ST | |
| 68 | 7.311-002.0 | 6kt-Mutter M5 -8-A2E ISO 4032 | 4.000 | ST | |
| 69 | 6.987-142.0 | Winkel Rueckleuchte | 2.000 | ST | |
| 70 | 7.304-521.0 | 6kt-Schraube M 6x16-A4-70 ISO 4017 | 4.000 | ST | |
| 71 | 7.651-014.0 | Lampe P21W-BA15s-12V EN 60809 | 2.000 | ST | |
| 72 | 7.651-025.0 | Gluehlampe P21/5W-BAY 15d-12V EN 60809 | 2.000 | ST | |
| 73 | 6.651-284.0 | Halogenlampe 12V55W | 1.000 | ST | |
| 74 | 6.987-273.0 | Kabeltuelle 18x16x3,5 | 1.000 | ST | |
| 75 | 6.987-471.0 | Seitenblech Kehrwalze | 1.000 | ST | |
| 76 | 6.987-576.0 | Antirutschband | 1.000 | ST | |
| 77 | 6.987-964.0 | Stuetze Haube | 1.000 | ST | |
| 78 | 6.987-872.0 | Blech Sitzkonsole fest | 1.000 | ST | |



12 Rumpfgeraet Stossfaenger

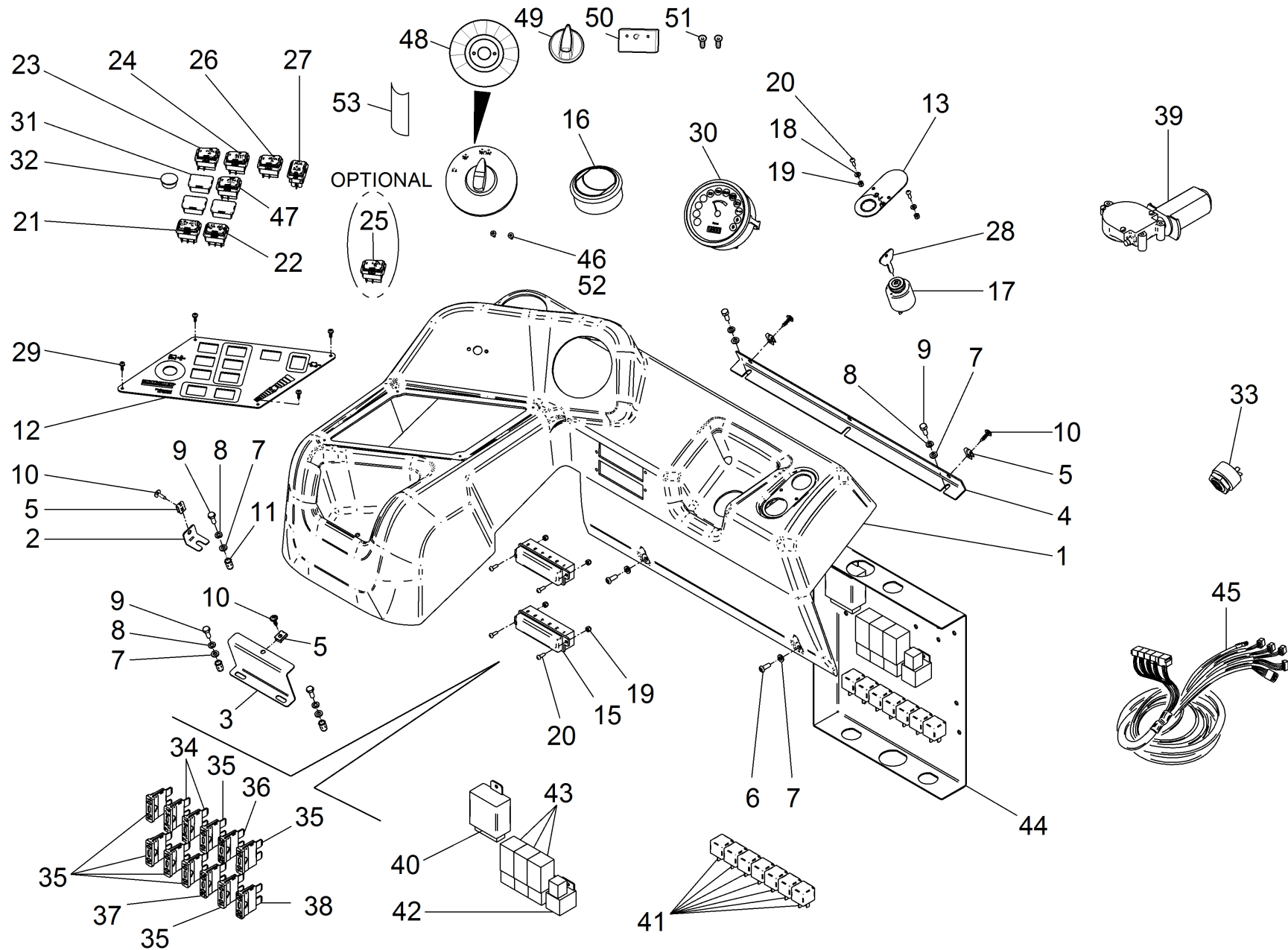
| POS | Artikelnr. | Beschreibung | Anzahl | Einheit | Werknummer ab | Werknummer bis |
|-----|-------------|--------------------------------------|--------|---------|---------------|----------------|
| 1 | 6.987-144.0 | Hebearm Kehrbehaelter | 1.000 | ST | | |
| 2 | 6.987-873.0 | Kehrbehaelter KM 150/500 Bat | 1.000 | ST | | |
| 3 | 6.987-146.0 | Stossstange vorne | 1.000 | ST | | |
| 4 | 6.987-147.0 | Aufnahme Hebearm | 2.000 | ST | | |
| 5 | 6.987-148.0 | Buchse | 2.000 | ST | | |
| 6 | 6.987-029.0 | Buchse | 1.000 | ST | | |
| 7 | 6.987-149.0 | Gummipuffer | 2.000 | ST | | |
| 8 | 7.312-017.0 | Scheibe 8-A2 ISO 7089 | 18.000 | ST | | |
| 9 | 7.304-400.0 | 6kt-Schraube M 8x30-8.8-A2E ISO 4017 | 18.000 | ST | | |
| 10 | 7.312-277.0 | Scheibe 8-200HV-A2E ISO7093-1 | 18.000 | ST | | |
| 11 | 7.311-510.0 | 6kt-Mutter M 8-8-A2E ISO 7040 | 19.000 | ST | | |
| 12 | 6.987-352.0 | Scheibe 10,5/30x5 | 2.000 | ST | | |
| 13 | 7.304-415.0 | 6kt-Schraube M10x25-8.8-A3E ISO 4017 | 2.000 | ST | | |
| 14 | 7.305-013.0 | Senkschraube M8x20-8.8-A2R ISO10642 | 4.000 | ST | | |
| 15 | 6.987-150.0 | Scharnier | 2.000 | ST | | |
| 16 | 5.069-316.0 | Haube KM 150/500 | 1.000 | ST | | |
| 17 | 6.987-358.0 | Senkschraube M6x25 | 4.000 | ST | | |
| 18 | 6.987-152.0 | Befestigungsplatte Haube | 1.000 | ST | | |
| 19 | 6.666-920.0 | Sterngriff | 1.000 | ST | | |
| 20 | 7.312-005.0 | Scheibe 10-200HV-A3E ISO 7090 | 8.000 | ST | | |
| 21 | 7.304-417.0 | 6kt-Schraube M10x30-8.8-A3E ISO 4017 | 8.000 | ST | | |
| 22 | 6.987-058.0 | Riegel | 5.000 | ST | | |
| 23 | 7.306-090.0 | Schraube M6x16 -8.8-R3R (In6Rd) | 3.000 | ST | | |
| 24 | 7.312-045.0 | Scheibe 6-200HV-P4E ISO 7089 | 12.000 | ST | | |
| 25 | 7.311-512.0 | 6kt-Mutter M 6-8-A2E ISO 7040 | 14.000 | ST | | |
| 26 | 7.312-260.0 | Scheibe 6 -100HV-A3E ISO 7094 | 6.000 | ST | | |
| 27 | 7.306-092.0 | Schraube M6x20-ST- 8.8-R3R (IN6RD) | 2.000 | ST | | |
| 28 | 7.311-003.0 | 6kt-Mutter M6 -8-A2E ISO 4032 | 8.000 | ST | | |
| 29 | 6.987-153.0 | Dichtung Gummi | 2.000 | ST | | |
| 30 | 6.987-109.0 | Abdeckkappe | 2.000 | ST | | |
| 31 | 6.635-326.0 | Signalhorn | 1.000 | ST | | |
| 32 | 7.304-521.0 | 6kt-Schraube M 6x16-A4-70 ISO 4017 | 1.000 | ST | | |
| 33 | 2.642-684.0 | Set Dichtung Kehrbehaelter | 1.000 | ST | | |

12 Rumpfgeraet Stossfaenger

| POS | Artikelnr. | Beschreibung | Anzahl | Einheit | Werknummer ab | Werknummer bis |
|-----|-------------|---|--------|---------|---------------|----------------|
| 35 | 6.987-588.0 | Bodenplatte Pedal | 1.000 | ST | | 34007 |
| 36 | 6.988-300.0 | Pedal elektr. hydraulisch | 1.000 | ST | 34008 | |
| 37 | 7.305-031.0 | Senkschraube M6x16-8.8-A2R (In6Rd) | 8.000 | ST | | |
| 38 | 6.987-157.0 | Sicherungsstange | 1.000 | ST | | |
| 39 | 6.987-355.0 | Tellerfeder DE40 | 4.000 | ST | | |
| 40 | 7.311-523.0 | 6kt-Mutter M16 -8-A2E ISO 7040 | 3.000 | ST | | |
| 41 | 6.987-165.0 | Blech Sicherungsstange | 1.000 | ST | | |
| 42 | 6.987-166.0 | Feder Sicherungsstange | 1.000 | ST | | |
| 43 | 6.987-164.0 | Aufnahme Sicherungsstange | 1.000 | ST | | |
| 44 | 7.312-089.0 | Scheibe 16-200HV ISO 7089 | 1.000 | ST | | |
| 45 | 7.312-089.0 | Scheibe 16-200HV ISO 7089 | 4.000 | ST | | |
| 46 | 7.304-035.0 | 6kt-Schraube M16X 50-A4-70 ISO 4017 | 2.000 | ST | | |
| 47 | 6.987-159.0 | Abdeckkappe | 1.000 | ST | | |
| 48 | 6.987-158.0 | Schutzgitter Haube | 1.000 | ST | | |
| 49 | 6.987-163.0 | Scheinwerfer vorne | 2.000 | ST | | |
| 50 | 6.987-357.0 | Blechschrabe 4,2x32 | 4.000 | ST | | |
| 51 | 6.987-160.0 | Blech Befestigung Haube | 2.000 | ST | | |
| 52 | 6.987-161.0 | Abdeckblech Scheinwerfer | 2.000 | ST | | |
| 53 | 7.303-385.0 | Bl.Schr. ST4,2X19,0-A2-20H-C-H ISO 7049 | 11.000 | ST | | |
| 54 | 7.312-001.0 | Scheibe 4 -200HV-A3E ISO 7089 | 4.000 | ST | | |
| 55 | 7.306-167.0 | Zyl.Schr. M 4x40-8.8-A2E DIN 912 | 2.000 | ST | | |
| 56 | 6.987-167.0 | Endschalter | 1.000 | ST | | |
| 57 | 7.305-055.0 | Senkschraube M6x30-A2-70 (IN6RD) | 4.000 | ST | | |
| 58 | 6.987-168.0 | Halogenlampe 12V 60/55W H4 | 2.000 | ST | | |
| 59 | 7.651-004.0 | Gluehlampe T4W/BA9S -12V 4W EN 60809 | 2.000 | ST | | |
| 60 | 6.987-162.0 | Stahlseil Haube | 2.000 | ST | | |
| 61 | 7.304-509.0 | 6kt-Schraube M 6x25-A4-70 ISO 4017 | 2.000 | ST | | |
| 62 | 6.988-837.0 | Magnetventil | 2.000 | ST | | |
| 63 | 6.987-688.0 | Blech Verstellung Endschalter | 1.000 | ST | | |
| 64 | 7.306-058.0 | Schraube M 4X 12- 8.8-R2R K-IN6RD | 2.000 | ST | | |
| 66 | 7.312-276.0 | Scheibe 6 -200HV-A2E ISO7093-1 | 2.000 | ST | | |
| 67 | 6.987-689.0 | Schutzblech Endschalter | 1.000 | ST | | |
| 68 | 7.306-087.0 | Schraube M6x10 -8.8-R3R (In6Rd) | 22.000 | ST | | |

12 Rumpfgeraet Stossfaenger

| POS | Artikelnr. | Beschreibung | Anzahl | Einheit | Werknummer ab | Werknummer bis |
|------------|-------------------|------------------------------|---------------|----------------|----------------------|-----------------------|
| 69 | 6.988-144.0 | Dichtung Gummi | 2.000 | ST | | |
| 70 | 5.394-087.0 | Aufkleber Signet Gel 102x113 | 1.000 | ST | | |
| 71 | 6.988-440.0 | Bodenplatte Pedal | 1.000 | ST | 34008 | |
| 72 | 6.987-113.0 | Abdeckkappe | 2.000 | ST | | |

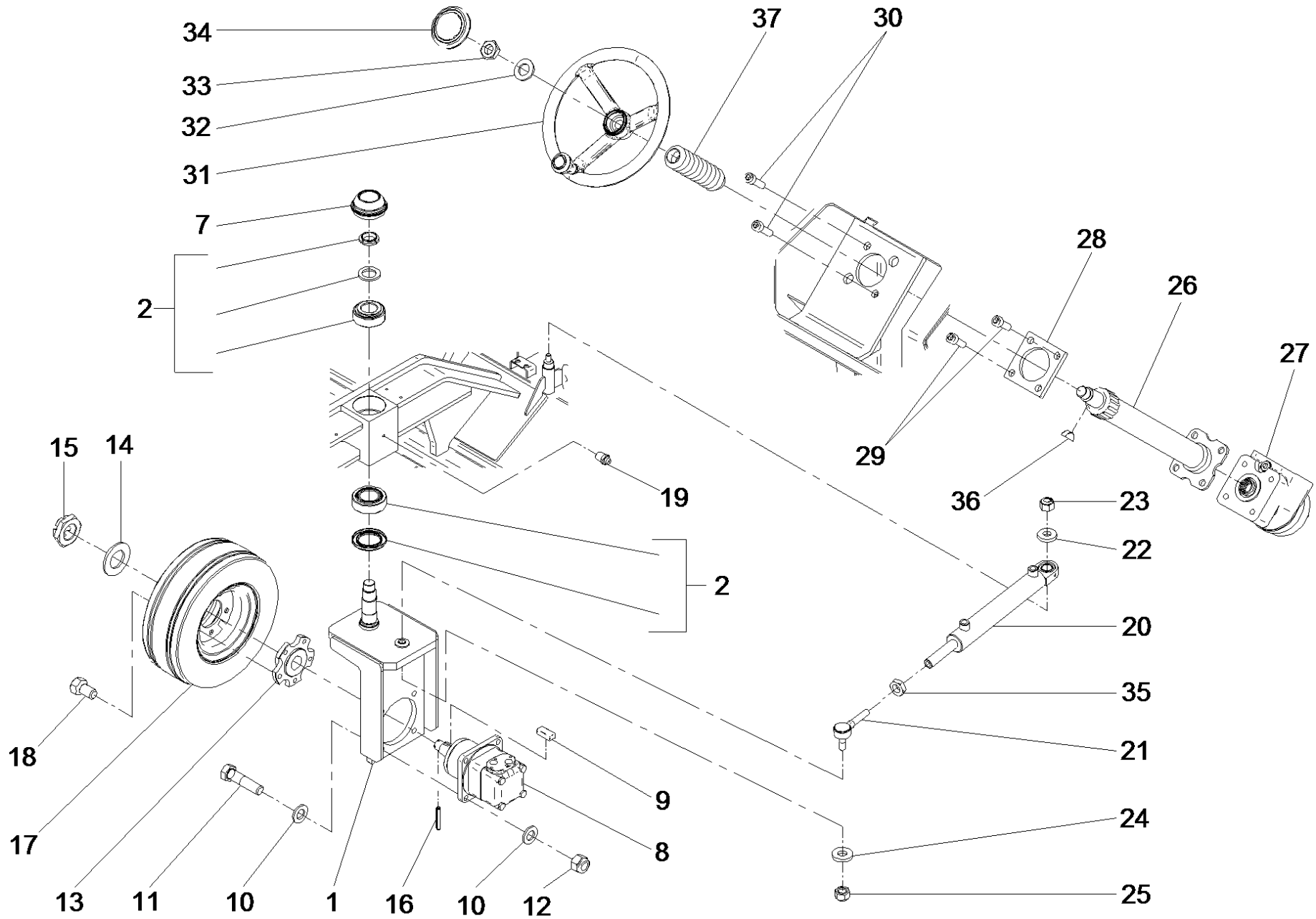


20 Cockpit

| POS | Artikelnr. | Beschreibung | Anzahl | Einheit |
|-----|-------------|--|--------|---------|
| 1 | 5.069-325.0 | Bedienfeld | 1.000 | ST |
| 2 | 6.987-207.0 | Halter seitlich | 1.000 | ST |
| 3 | 6.987-208.0 | Halter hinten | 1.000 | ST |
| 4 | 6.987-209.0 | Befestigung Armaturenbrett | 1.000 | ST |
| 5 | 6.987-210.0 | Klammer | 4.000 | ST |
| 6 | 7.306-090.0 | Schraube M6x16 -8.8-R3R (In6Rd) | 2.000 | ST |
| 7 | 7.312-045.0 | Scheibe 6-200HV-P4E ISO 7089 | 7.000 | ST |
| 8 | 7.313-003.0 | Federring B 6-FSt-A3E DIN 127 | 5.000 | ST |
| 9 | 7.304-521.0 | 6kt-Schraube M 6x16-A4-70 ISO 4017 | 5.000 | ST |
| 10 | 7.303-078.0 | Bl.Schr. ST4,8X19-ST-A2R (KOMBI-IN6RD | 4.000 | ST |
| 12 | 6.987-211.0 | Blech Bedienfeld bedruckt | 1.000 | ST |
| 13 | 6.987-927.0 | Blech Zuendung bedruckt | 1.000 | ST |
| 15 | 6.987-220.0 | Sicherungskasten | 2.000 | ST |
| 16 | 6.987-214.0 | Luftduese verstellbar D72 | 1.000 | ST |
| 17 | 6.987-928.0 | Zuendschloss | 1.000 | ST |
| 18 | 7.312-001.0 | Scheibe 4 -200HV-A3E ISO 7089 | 2.000 | ST |
| 19 | 7.311-424.0 | 6kt-Mutter M4 -8-A2E ISO 7040 | 6.000 | ST |
| 20 | 7.306-058.0 | Schraube M 4X 12- 8.8-R2R K-IN6RD | 6.000 | ST |
| 21 | 6.632-509.0 | Schalter Kehrbehaelter | 1.000 | ST |
| 22 | 6.632-512.0 | Schalter Klappe Behaelter | 1.000 | ST |
| 23 | 6.632-476.0 | Schalter 2-polig Leuchte | 1.000 | ST |
| 24 | 6.632-478.0 | Taster Filterreinigung | 1.000 | ST |
| 25 | 6.632-484.0 | Schalter 2-polig Arbeitslicht | 1.000 | ST |
| 26 | 6.632-475.0 | Taster 2-polig Hupe | 1.000 | ST |
| 27 | 6.632-513.0 | Schalter Fahrtrichtung | 1.000 | ST |
| 28 | 6.987-930.0 | Zuendschluessel | 1.000 | ST |
| 29 | 7.303-266.0 | Bl.Schr. St3,9x19 -A2-20H-C-H DIN 7981 | 4.000 | ST |
| 30 | 6.987-929.0 | Betriebsstundenzaehler | 1.000 | ST |
| 31 | 6.631-736.0 | Blindstopfen | 3.000 | ST |
| 32 | 6.368-079.0 | Abdeckkappe | 1.000 | ST |
| 33 | 6.987-384.0 | Rueckfahrupe | 1.000 | ST |
| 34 | 7.644-007.0 | Sicherungseinsatz C 7,5 DIN 72581-3 | 2.000 | ST |
| 35 | 7.644-017.0 | Sicherungseinsatz C10 DIN 72581-3 | 7.000 | ST |

20 Cockpit

| POS | Artikelnr. | Beschreibung | Anzahl | Einheit |
|-----|-------------|---|--------|---------|
| 36 | 7.644-012.0 | Sicherungseinsatz C25 DIN 72581-3 | 1.000 | ST |
| 37 | 7.644-040.0 | Sicherungseinsatz C30 DIN 72581-3 | 1.000 | ST |
| 38 | 7.644-005.0 | Sicherungseinsatz C20 DIN 72581-3 | 1.000 | ST |
| 39 | 6.987-171.0 | Motor Filterruettler 12V | 1.000 | ST |
| 40 | 6.987-391.0 | Gehaeuse Diode | 1.000 | ST |
| 41 | 6.987-394.0 | Relais 12V 30/40 A | 7.000 | ST |
| 42 | 6.987-395.0 | Relais 12V 30/40 A | 1.000 | ST |
| 43 | 6.987-398.0 | Zeitrelais 12V | 3.000 | ST |
| 44 | 6.987-401.0 | Elektrokasten | 1.000 | ST |
| 45 | 6.987-926.0 | Kabelsatz KM 150/500 Bat | 1.000 | ST |
| 46 | 7.306-054.0 | Schraube M 3x16-ST- 8.8-R2R (IN6RD) | 2.000 | ST |
| 47 | 6.632-508.0 | Schalter Geblaese | 1.000 | ST |
| 48 | 5.032-109.0 | Formteil Symbolscheibe Industrial Range | 1.000 | ST |
| 49 | 5.321-738.0 | Griff Bedienkonzept | 1.000 | ST |
| 50 | 6.635-027.0 | Schalter Bedienfeld | 1.000 | ST |
| 51 | 7.305-019.0 | Senkschraube M4x16 -8.8-R2R (In6Rd) | 2.000 | ST |
| 52 | 7.312-043.0 | Scheibe 3-A2 ISO 7089 | 2.000 | ST |
| 53 | 6.313-014.0 | Federungselement | 1.000 | ST |



30 Lenkeinheit

| POS | Artikelnr. | Beschreibung | Anzahl | Einheit |
|-----|-------------|------------------------------------|--------|---------|
| 1 | 6.987-015.0 | Aufnahme Motor Radnabe | 1.000 | ST |
| 2 | 2.642-666.0 | Set Lagerung Lenkung | 1.000 | ST |
| 7 | 6.987-016.0 | Deckel Radkappe | 1.000 | ST |
| 8 | 6.987-879.0 | Hydraulikmotor | 1.000 | ST |
| 9 | 6.987-370.0 | Passfeder 12x8x28 | 1.000 | ST |
| 10 | 7.312-089.0 | Scheibe 16-200HV ISO 7089 | 10.000 | ST |
| 11 | 7.304-036.0 | 6kt-Schraube M16x65-A2-70 ISO 4014 | 4.000 | ST |
| 12 | 7.311-523.0 | 6kt-Mutter M16 -8-A2E ISO 7040 | 4.000 | ST |
| 13 | 6.987-018.0 | Radnabe Motor | 1.000 | ST |
| 14 | 6.987-371.0 | Scheibe Motor | 1.000 | ST |
| 15 | 6.987-372.0 | Kronenmutter | 1.000 | ST |
| 16 | 7.314-956.0 | Spannstift 6x40-St ISO 8752 | 1.000 | ST |
| 17 | 6.987-880.0 | Rad Vollgummi vorne 455mm | 1.000 | ST |
| 18 | 6.987-272.0 | Radschraube M16x1,5 | 5.000 | ST |
| 19 | 6.987-373.0 | Schmiernippel M8x1,25 | 1.000 | ST |
| 20 | 6.987-020.0 | Hydraulikzylinder Lenkung | 1.000 | ST |
| 21 | 6.987-021.0 | Spurstangenkopf | 1.000 | ST |
| 22 | 5.250-160.0 | Lagerbuchse Scheibe | 1.000 | ST |
| 23 | 7.311-515.0 | 6kt-Mutter M12-8-A2E ISO 7040 | 1.000 | ST |
| 24 | 5.115-542.0 | Scheibe | 1.000 | ST |
| 25 | 6.987-380.0 | Mutter Hydraulikzylinder | 1.000 | ST |
| 26 | 6.987-022.0 | Lenksaeule | 1.000 | ST |
| 27 | 6.987-023.0 | Lenkung | 1.000 | ST |
| 28 | 6.987-024.0 | Distanzstueck | 1.000 | ST |
| 29 | 7.306-063.0 | Zyl.Schr. M10x30-8.8-A3E ISO4762 | 2.000 | ST |
| 30 | 7.306-074.0 | Zyl.Schr. M10x35-8.8-A3E ISO4762 | 2.000 | ST |
| 31 | 6.987-025.0 | Lenkrad D350 | 1.000 | ST |
| 32 | 5.115-081.0 | Scheibe | 1.000 | ST |
| 33 | 6.987-374.0 | Mutter Lenkrad | 1.000 | ST |
| 34 | 6.987-026.0 | Kappe Lenkrad | 1.000 | ST |
| 35 | 6.987-375.0 | Mutter M16x1 | 1.000 | ST |
| 36 | 7.318-205.0 | Scheibenfeder 5x6,5-C45R DIN 6888 | 1.000 | ST |
| 37 | 6.987-579.0 | Faltenbalg | 1.000 | ST |

40 Raeder vorne

| POS | Artikelnr. | Beschreibung | Anzahl | Einheit |
|-----|-------------|--------------------------------------|--------|---------|
| 1 | 6.987-183.0 | Achse Vorderrad | 2.000 | ST |
| 2 | 6.987-184.0 | Bremsscheibe rechts | 1.000 | ST |
| 3 | 6.987-185.0 | Bremsscheibe links | 1.000 | ST |
| 4 | 7.312-017.0 | Scheibe 8-A2 ISO 7089 | 14.000 | ST |
| 5 | 7.312-060.0 | Scheibe 24-100HV-A3E ISO 7091 | 2.000 | ST |
| 6 | 6.987-281.0 | Nutmutter M25x1,5 | 2.000 | ST |
| 7 | 6.987-279.0 | Senkschraube M14 x 30 ISO 10642 | 6.000 | ST |
| 8 | 6.987-186.0 | Bremshebel rechts | 1.000 | ST |
| 9 | 7.462-012.0 | Gabelkopf G 6x24-ST-A2E DIN 71752 | 2.000 | ST |
| 10 | 6.316-093.0 | Bolzen D 6 | 2.000 | ST |
| 11 | 6.987-187.0 | Bremshebel links | 1.000 | ST |
| 12 | 6.987-189.0 | Bremsseil | 2.000 | ST |
| 13 | 7.304-400.0 | 6kt-Schraube M 8x30-8.8-A2E ISO 4017 | 2.000 | ST |
| 14 | 7.311-510.0 | 6kt-Mutter M 8-8-A2E ISO 7040 | 4.000 | ST |
| 15 | 6.987-560.0 | Feder TR46 | 2.000 | ST |
| 16 | 5.120-415.0 | Bremstrommel | 2.000 | ST |
| 17 | 6.987-403.0 | Radialdichtung | 2.000 | ST |
| 18 | 2.642-677.0 | Set Radlager | 1.000 | ST |
| 20 | 7.312-089.0 | Scheibe 16-200HV ISO 7089 | 2.000 | ST |
| 21 | 7.311-059.0 | 6kt-Mutter M16x1,5 -8-A2E ISO10512 | 2.000 | ST |
| 22 | 6.987-882.0 | Rad Vollgummi hinten 457mm | 2.000 | ST |
| 22 | 4.515-329.0 | Radsatz Vollgummi KM 150/500 D/LPG | 1.000 | ST |
| 23 | 6.987-272.0 | Radschraube M16x1,5 | 10.000 | ST |
| 24 | 6.987-192.0 | Radkappe D47 | 2.000 | ST |
| 25 | 6.987-193.0 | Bremspedal | 1.000 | ST |
| 26 | 6.987-194.0 | Pumpe Bremse | 1.000 | ST |
| 27 | 7.312-045.0 | Scheibe 6-200HV-P4E ISO 7089 | 4.000 | ST |
| 28 | 7.304-521.0 | 6kt-Schraube M 6x16-A4-70 ISO 4017 | 3.000 | ST |
| 29 | 7.304-399.0 | 6kt-Schraube M 8x25-8.8-A2E ISO 4017 | 2.000 | ST |
| 30 | 6.987-276.0 | Dichtscheibe 1/4" | 1.000 | ST |
| 31 | 6.987-188.0 | Augenschraube M10x1,25 | 1.000 | ST |
| 32 | 6.987-275.0 | Hohlschraube 12x1,5 | 1.000 | ST |
| 33 | 7.304-387.0 | 6kt-Schraube M 6x30-8.8-A2E ISO 4017 | 1.000 | ST |

40 Raeder vorne

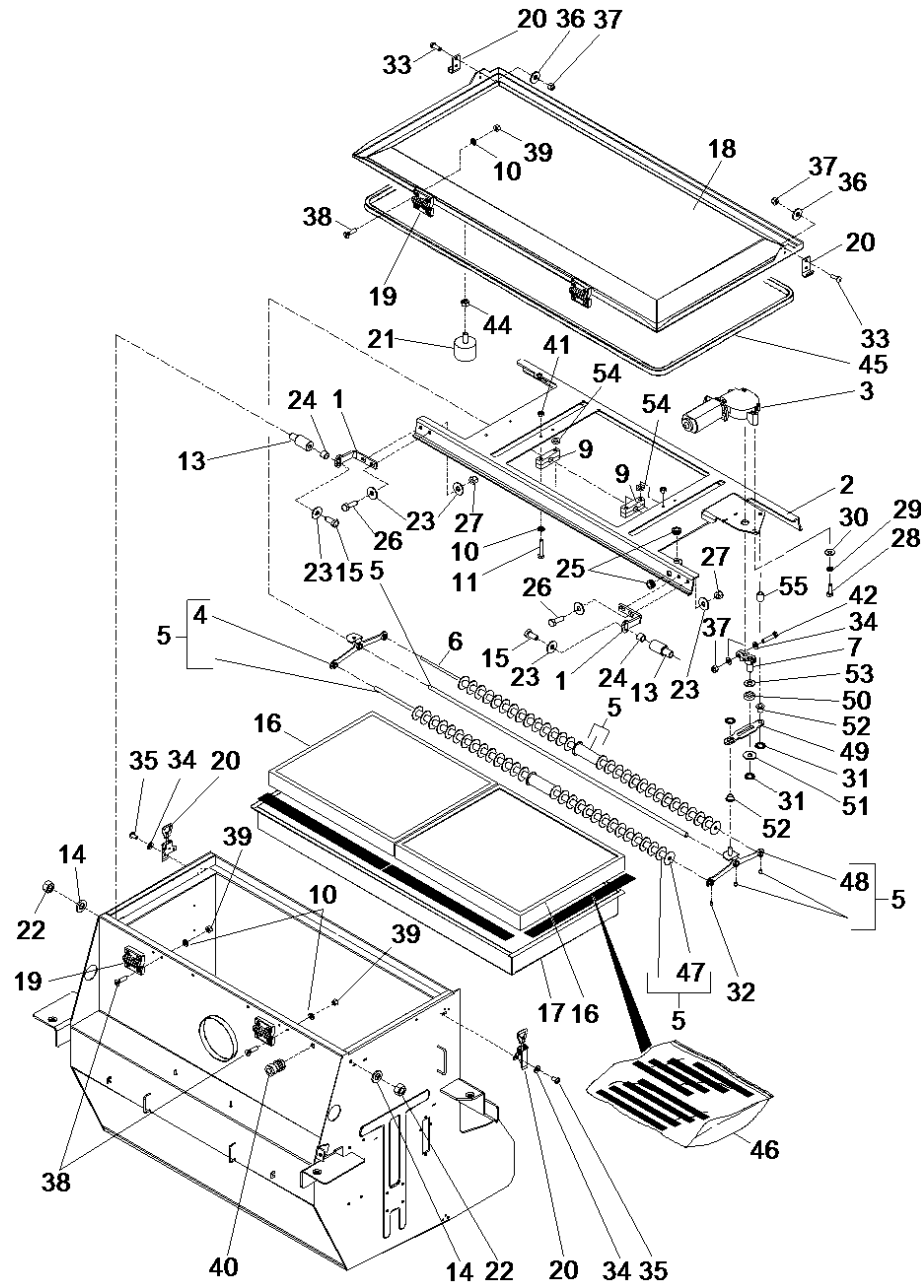
| POS | Artikelnr. | Beschreibung | Anzahl | Einheit |
|-----|-------------|--|--------|---------|
| 34 | 7.311-512.0 | 6kt-Mutter M 6-8-A2E ISO 7040 | 1.000 | ST |
| 36 | 7.312-278.0 | Scheibe 5-200HV-A2E ISO7093-1 | 2.000 | ST |
| 37 | 6.987-195.0 | Oeltank Bremse | 1.000 | ST |
| 38 | 6.987-196.0 | Bremshebel 4200786 | 1.000 | ST |
| 39 | 6.987-197.0 | Handbremsseil | 1.000 | ST |
| 40 | 7.312-276.0 | Scheibe 6 -200HV-A2E ISO7093-1 | 2.000 | ST |
| 41 | 6.987-198.0 | Riemenscheibe | 2.000 | ST |
| 42 | 6.987-199.0 | Gabelkopf | 1.000 | ST |
| 43 | 6.987-200.0 | Bolzen | 2.000 | ST |
| 44 | 7.343-014.0 | Sicherungsring 8x0,8-FST-PHR DIN 471 | 4.000 | ST |
| 45 | 6.987-201.0 | Handbremsseil | 1.000 | ST |
| 46 | 7.373-020.0 | Schlauchschelle A 10-16x9-W2-2 DIN3017 | 2.000 | ST |
| 47 | 7.311-003.0 | 6kt-Mutter M6 -8-A2E ISO 4032 | 3.000 | ST |
| 48 | 6.987-653.0 | Schlauch D5,5/12,5x1000 | 1.000 | ST |
| 49 | 6.304-168.0 | Linsenschraube IN-6kt M8x20 A2-70 | 4.000 | ST |
| 50 | 6.987-273.0 | Kabeltuelle 18x16x3,5 | 4.000 | ST |
| 51 | 7.311-421.0 | 6kt-Mutter M 5-04-A2E ISO 10511 | 2.000 | ST |
| 52 | 6.987-202.0 | Rohr Kupfer | 1.000 | ST |
| 53 | 6.987-203.0 | Rohr Kupfer | 2.000 | ST |
| 54 | 6.987-567.0 | 3-Wege-Kupplung | 1.000 | ST |
| 55 | 6.987-715.0 | Riegel Bremsschlauch | 2.000 | ST |
| 56 | 7.306-087.0 | Schraube M6x10 -8.8-R3R (In6Rd) | 2.000 | ST |
| 57 | 6.987-383.0 | Distanzscheibe Rad | 2.000 | ST |
| 58 | 6.987-568.0 | Bremsbacken | 2.000 | ST |
| 59 | 6.987-569.0 | Bremszylinder | 2.000 | ST |
| 60 | 6.987-570.0 | Bremshebel Verstellung | 2.000 | ST |
| 61 | 6.987-717.0 | Schutzblech Bremse links | 1.000 | ST |
| 62 | 6.987-716.0 | Schutzblech Bremse rechts | 1.000 | ST |
| 63 | 6.987-571.0 | Dichtscheibe | 1.000 | ST |

50 Kehrwalze

| POS | Artikelnr. | Beschreibung | Anzahl | Einheit | Werknummer ab | Werknummer bis |
|-----|-------------|--|--------|---------|---------------|----------------|
| 1 | 6.987-043.0 | Halter Buegel links | 1.000 | ST | | |
| 2 | 6.987-044.0 | Halter Buegel rechts | 1.000 | ST | | |
| 3 | 6.987-045.0 | Rohrschelle D 25,5 | 4.000 | ST | | |
| 4 | 6.987-046.0 | Schwinge Kehrwalze links | 1.000 | ST | | |
| 5 | 6.987-047.0 | Schwinge Kehrwalze rechts | 1.000 | ST | | |
| 6 | 6.987-048.0 | Schutzblech Kehrwalze | 1.000 | ST | | |
| 7 | 7.312-017.0 | Scheibe 8-A2 ISO 7089 | 10.000 | ST | | |
| 8 | 7.304-395.0 | 6kt-Schraube M8x16-8.8-A2E ISO 4017 | 6.000 | ST | | |
| 9 | 7.313-004.0 | Federring B 8-FSt-A3E DIN 127 | 4.000 | ST | | |
| 10 | 7.304-461.0 | 6kt-Schraube M 8x50-8.8-A2E ISO 4017 | 4.000 | ST | | |
| 11 | 7.312-277.0 | Scheibe 8-200HV-A2E ISO7093-1 | 4.000 | ST | | |
| 12 | 7.311-510.0 | 6kt-Mutter M 8-8-A2E ISO 7040 | 4.000 | ST | | |
| 13 | 6.987-049.0 | Buchse K4 12x10x10- | 6.000 | ST | | |
| 14 | 7.304-445.0 | 6kt-Schraube M10x80-8.8-A3E ISO 4017 | 1.000 | ST | | |
| 15 | 7.312-005.0 | Scheibe 10-200HV-A3E ISO 7090 | 15.000 | ST | | |
| 16 | 7.311-511.0 | 6kt-Mutter M10-8-A2E ISO 7040 | 4.000 | ST | | |
| 17 | 7.312-276.0 | Scheibe 6 -200HV-A2E ISO7093-1 | 1.000 | ST | | |
| 18 | 7.304-536.0 | 6kt-Schraube M 6x20-A4-70 ISO 4017 | 1.000 | ST | | |
| 19 | 6.987-881.0 | Hydraulikmotor | 1.000 | ST | | 50020 |
| 20 | 7.313-005.0 | Federring B10-FSt-A3E DIN 127 | 4.000 | ST | | |
| 21 | 7.304-414.0 | 6kt-Schraube M10x20-8.8-A3E ISO 4017 | 4.000 | ST | | |
| 22 | 7.318-042.0 | Passfeder 8x7x32-C45R DIN 6885 | 1.000 | ST | | |
| 23 | 6.987-051.0 | Nabe Antrieb | 1.000 | ST | | |
| 24 | 5.115-390.0 | Scheibe | 1.000 | ST | | |
| 25 | 7.304-397.0 | 6kt-Schraube M8x20-8.8-A2E ISO 4017 | 1.000 | ST | | |
| 26 | 6.987-052.0 | Nabe Antrieb | 1.000 | ST | | |
| 27 | 7.401-134.0 | Kugellager 6203-2RS-WAELZLAGST DIN 625 | 2.000 | ST | | |
| 28 | 7.343-109.0 | Sicherungsring 40x1,75 -ST-ph DIN 472 | 2.000 | ST | | |
| 29 | 5.129-262.0 | Anschlag Sicherheitsschalter | 1.000 | ST | | |
| 30 | 7.304-521.0 | 6kt-Schraube M 6x16-A4-70 ISO 4017 | 2.000 | ST | | |
| 31 | 6.987-053.0 | Stellhebel Kehrwalze | 1.000 | ST | | |
| 32 | 6.321-246.0 | Sterngriff M 10 | 1.000 | ST | | |
| 33 | 7.311-006.0 | 6kt-Mutter M10 -8-A3E ISO 4032 | 9.000 | ST | | |

50 Kehrwalze

| POS | Artikelnr. | Beschreibung | Anzahl | Einheit | Werknummer ab | Werknummer bis |
|-----|-------------|--|--------|---------|---------------|----------------|
| 34 | 6.987-054.0 | Regler Kehrwalze | 1.000 | ST | | |
| 35 | 6.313-004.0 | Federstecker 4,0 | 1.000 | ST | | |
| 36 | 6.987-277.0 | Bolzen | 2.000 | ST | | |
| 37 | 6.987-055.0 | Hebel Lenkung | 1.000 | ST | | |
| 38 | 6.987-278.0 | Gewindebolzen | 1.000 | ST | | |
| 39 | 7.304-125.0 | 6kt-Schraube M8x85 -8.8-A2E ISO 4014 | 2.000 | ST | | |
| 40 | 6.987-056.0 | Hebel Lenkung | 1.000 | ST | | |
| 41 | 6.987-057.0 | Hubstange Kehrwalze | 1.000 | ST | | |
| 42 | 6.987-058.0 | Riegel | 1.000 | ST | | |
| 43 | 6.987-087.0 | Gummipuffer M6 | 1.000 | ST | | |
| 44 | 6.997-180.0 | Gabelkopf 10X20 | 3.000 | ST | | |
| 45 | 6.997-179.0 | Bolzen M10X20 | 3.000 | ST | | |
| 46 | 6.987-059.0 | Frontplatte Federfuehrung | 1.000 | ST | | |
| 47 | 6.987-036.0 | Zylinder Seitenbesen | 1.000 | ST | | |
| 48 | 6.987-060.0 | Gewindestange | 1.000 | ST | | |
| 49 | 6.987-061.0 | Kette Kehrwalze | 1.000 | ST | | |
| 50 | 7.304-415.0 | 6kt-Schraube M10x25-8.8-A3E ISO 4017 | 2.000 | ST | | |
| 51 | 6.987-698.0 | Gewindestange | 1.000 | ST | | |
| 52 | 6.987-063.0 | Platte Federfuehrung | 1.000 | ST | | |
| 53 | 6.987-064.0 | Feder D 3,2 | 2.000 | ST | | |
| 54 | 6.987-699.0 | Distanzstueck | 1.000 | ST | | |
| 55 | 6.987-437.0 | Kehrwalze weich natur KM 150/500 | 1.000 | ST | | |
| 55 | 6.987-085.0 | Kehrwalze Standard KM 150/500 | 1.000 | ST | | |
| 55 | 6.987-436.0 | Kehrwalze hart KM 150/500 | 1.000 | ST | | |
| 56 | 7.312-045.0 | Scheibe 6-200HV-P4E ISO 7089 | 1.000 | ST | | |
| 57 | 6.987-264.0 | Knopf rot M6 | 1.000 | ST | | |
| 58 | 6.987-700.0 | Schutz Kette | 1.000 | ST | | |
| 59 | 7.311-382.0 | Hutmutter M10-6-A3E DIN 1587 | 1.000 | ST | | |
| 60 | 6.988-768.0 | Hydraulikmotor KM 150/500 R Bp 4212298 | 1.000 | ST | 50021 | |

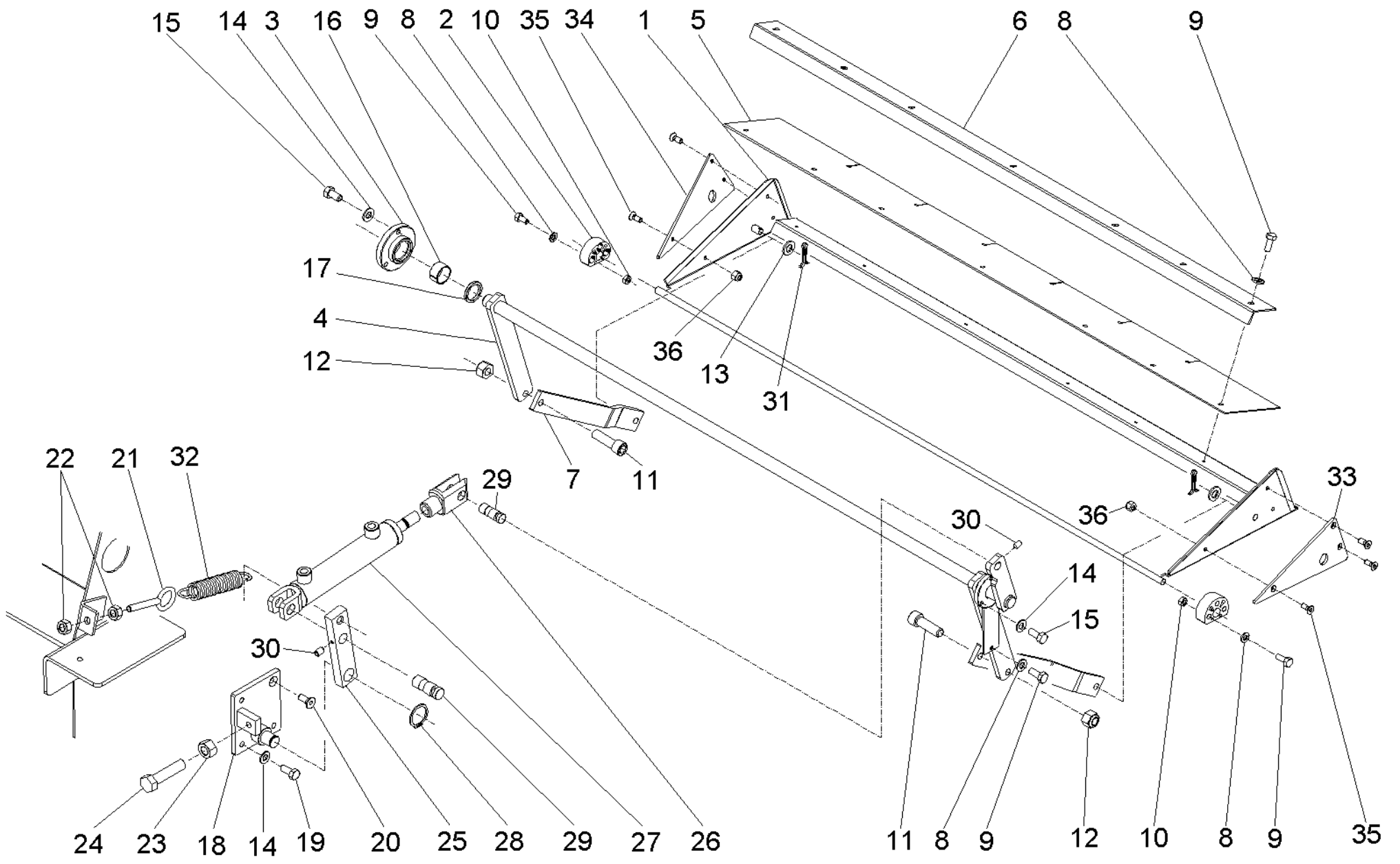


60 Filterkasten

| POS | Artikelnr. | Beschreibung | Anzahl | Einheit | Werknummer ab | Bemerkung |
|-----|-------------|---------------------------------------|--------|---------|---------------|-----------|
| 1 | 6.987-169.0 | Halter | 2.000 | ST | | |
| 2 | 6.987-170.0 | Filterruettler | 1.000 | ST | | |
| 3 | 6.987-171.0 | Motor Filterruettler 12V | 1.000 | ST | | |
| 4 | 6.987-172.0 | Hebel Filterruettler | 1.000 | ST | | |
| 5 | 2.642-685.0 | Set Ruettler kpl. | 1.000 | ST | | |
| 7 | 6.987-173.0 | Drehgelenk Filterruettler | 1.000 | ST | | |
| 9 | 6.987-175.0 | Klammer Filterruettler | 4.000 | ST | | |
| 10 | 7.312-045.0 | Scheibe 6-200HV-P4E ISO 7089 | 12.000 | ST | | |
| 11 | 7.304-389.0 | 6kt-Schraube M 6x40-8.8-A2E ISO 4017 | 4.000 | ST | | |
| 13 | 6.987-176.0 | Bolzen Scharnier | 3.000 | ST | | |
| 14 | 7.312-008.0 | Scheibe 12-200HV-A3E ISO 7090 | 2.000 | ST | | |
| 15 | 7.304-397.0 | 6kt-Schraube M8x20-8.8-A2E ISO 4017 | 2.000 | ST | | |
| 16 | 6.988-159.0 | Flachfaltenfilter Papier KM150/500 | 2.000 | ST | | |
| 17 | 6.987-178.0 | Gehaeuse Flachfaltenfilter | 1.000 | ST | | |
| 18 | 6.987-179.0 | Deckel Behaelter Filter | 1.000 | ST | | |
| 19 | 6.987-180.0 | Scharnier | 2.000 | ST | | |
| 20 | 6.987-181.0 | Schliesshebel | 2.000 | ST | | |
| 21 | 6.987-351.0 | Gummipuffer M8 | 4.000 | ST | | |
| 22 | 7.311-008.0 | 6kt-Mutter M12-8-A3E ISO 4032 | 2.000 | ST | | |
| 23 | 7.312-277.0 | Scheibe 8-200HV-A2E ISO7093-1 | 12.000 | ST | | |
| 24 | 6.987-182.0 | Huelse | 2.000 | ST | | |
| 25 | 6.987-273.0 | Kabeltuelle 18x16x3,5 | 2.000 | ST | | |
| 26 | 7.304-399.0 | 6kt-Schraube M 8x25-8.8-A2E ISO 4017 | 5.000 | ST | | |
| 27 | 7.311-510.0 | 6kt-Mutter M 8-8-A2E ISO 7040 | 5.000 | ST | | |
| 28 | 7.304-536.0 | 6kt-Schraube M 6x20-A4-70 ISO 4017 | 3.000 | ST | | |
| 29 | 7.313-003.0 | Federring B 6-FSt-A3E DIN 127 | 3.000 | ST | | |
| 30 | 7.312-276.0 | Scheibe 6 -200HV-A2E ISO7093-1 | 3.000 | ST | | |
| 31 | 7.343-047.0 | Sicherungsscheibe 10-FST-A2E DIN 6799 | 2.000 | ST | | |
| 33 | 7.306-058.0 | Schraube M 4X 12- 8.8-R2R K-IN6RD | 3.000 | ST | | |
| 34 | 7.312-001.0 | Scheibe 4 -200HV-A3E ISO 7089 | 8.000 | ST | | |
| 35 | 7.306-056.0 | Schraube M4x8 -8.8-R2R (In6Rd) | 6.000 | ST | | |
| 36 | 7.312-278.0 | Scheibe 5-200HV-A2E ISO7093-1 | 4.000 | ST | | |
| 37 | 7.311-424.0 | 6kt-Mutter M4 -8-A2E ISO 7040 | 5.000 | ST | | |

60 Filterkasten

| POS | Artikelnr. | Beschreibung | Anzahl | Einheit | Werknummer ab | Bemerkung |
|-----|-------------|-------------------------------------|--------|---------|---------------|-----------|
| 38 | 6.987-358.0 | Senkschraube M6x25 | 5.000 | ST | | |
| 39 | 7.311-512.0 | 6kt-Mutter M 6-8-A2E ISO 7040 | 8.000 | ST | | |
| 40 | 6.987-353.0 | Kabelverschraubung PG9 | 1.000 | ST | | |
| 41 | 7.311-003.0 | 6kt-Mutter M6 -8-A2E ISO 4032 | 4.000 | ST | | |
| 42 | 7.304-363.0 | 6kt-Schr. M 4X 20- 8.8-A2E ISO 4017 | 1.000 | ST | | |
| 43 | 7.312-005.0 | Scheibe 10-200HV-A3E ISO 7090 | 1.000 | ST | | |
| 44 | 7.311-004.0 | 6kt-Mutter M8 -8-A3E ISO 4032 | 4.000 | ST | | |
| 45 | 6.987-652.0 | Dichtprofil 3600mm | 1.000 | ST | | |
| 46 | 2.642-800.0 | Set Dichtung Filter | 1.000 | ST | | |
| 47 | 6.987-664.0 | Scheibe | 60.000 | ST | | |
| 48 | 6.987-548.0 | Hebel Filterrueetler Bolzen | 1.000 | ST | | |
| 49 | 6.987-578.0 | Pleuel | 1.000 | ST | 30010 | Version 2 |
| 50 | 6.987-573.0 | Kugellager 6800 RS | 1.000 | ST | | |
| 51 | 6.987-352.0 | Scheibe 10,5/30x5 | 1.000 | ST | | |
| 52 | 6.987-524.0 | Buchse | 2.000 | ST | | |
| 53 | 6.987-337.0 | Dichtscheibe | 1.000 | ST | | |
| 54 | 5.129-262.0 | Anschlag Sicherheitsschalter | 4.000 | ST | | |
| 55 | 6.987-525.0 | Distanzhuelse | 1.000 | ST | | |

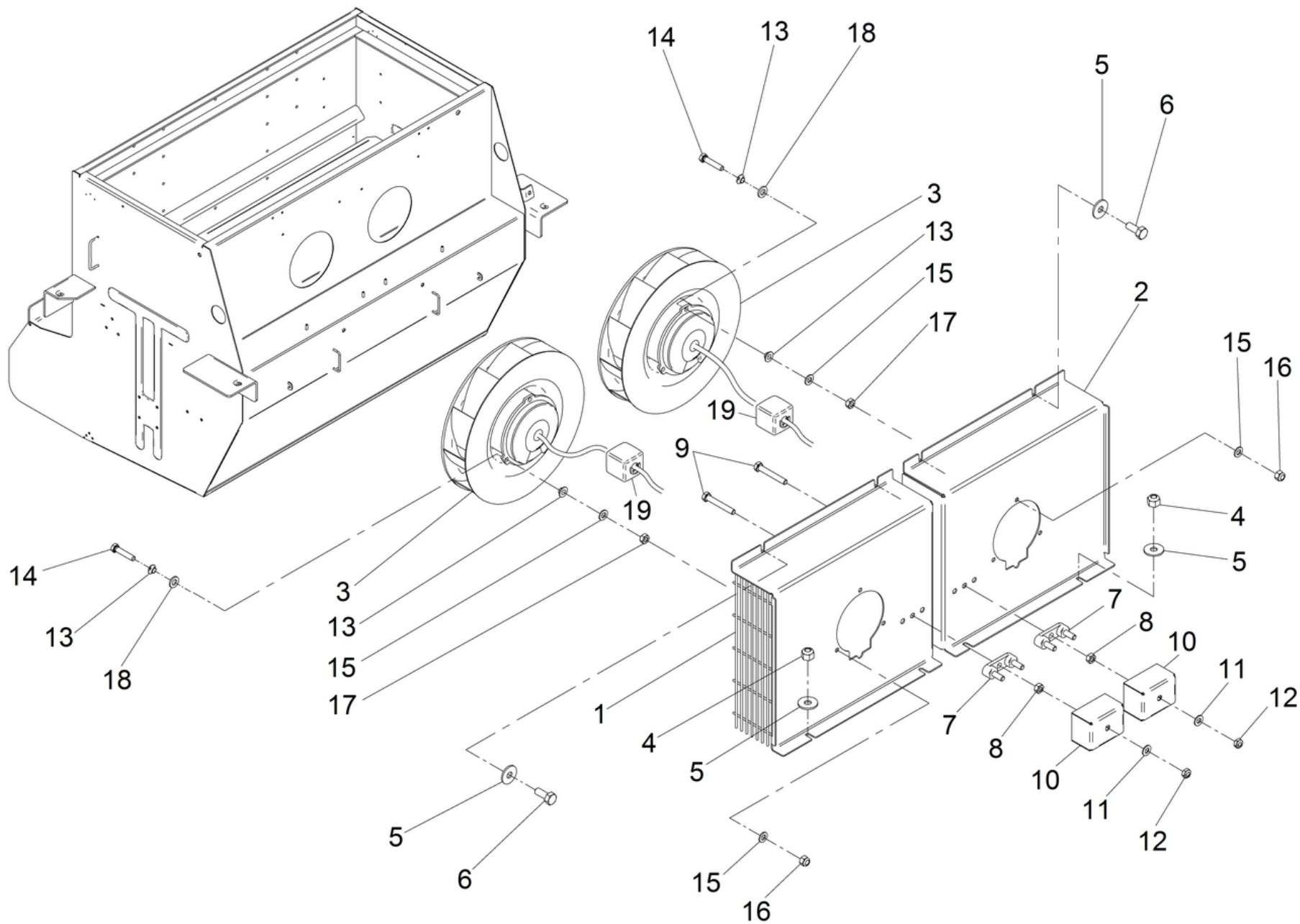


70 Grobschmutzklappe

| POS | Artikelnr. | Beschreibung | Anzahl | Einheit |
|-----|-------------|--------------------------------------|--------|---------|
| 1 | 6.987-066.0 | Klappe KM 150/500 | 1.000 | ST |
| 2 | 6.987-067.0 | Buegel Scharnier | 2.000 | ST |
| 3 | 6.987-068.0 | Flansch | 1.000 | ST |
| 4 | 6.987-069.0 | Oeffnungsklappe Welle | 1.000 | ST |
| 5 | 6.987-070.0 | Gummilippe | 1.000 | ST |
| 6 | 6.987-071.0 | Blech Befestigung | 1.000 | ST |
| 7 | 6.987-072.0 | Steuerstange Klappe | 2.000 | ST |
| 8 | 7.312-045.0 | Scheibe 6-200HV-P4E ISO 7089 | 14.000 | ST |
| 9 | 7.304-521.0 | 6kt-Schraube M 6x16-A4-70 ISO 4017 | 14.000 | ST |
| 10 | 7.311-003.0 | 6kt-Mutter M6 -8-A2E ISO 4032 | 6.000 | ST |
| 11 | 6.987-280.0 | Zylinderschraube M12x40 ISO4762 | 2.000 | ST |
| 12 | 7.311-515.0 | 6kt-Mutter M12-8-A2E ISO 7040 | 2.000 | ST |
| 13 | 7.312-008.0 | Scheibe 12-200HV-A3E ISO 7090 | 2.000 | ST |
| 14 | 7.312-017.0 | Scheibe 8-A2 ISO 7089 | 9.000 | ST |
| 15 | 7.304-395.0 | 6kt-Schraube M8x16-8.8-A2E ISO 4017 | 6.000 | ST |
| 16 | 6.987-073.0 | Buchse GB 2515 | 1.000 | ST |
| 17 | 6.987-074.0 | Ring G25.32.4 | 1.000 | ST |
| 18 | 6.987-075.0 | Zylinder Platte Klappe | 1.000 | ST |
| 19 | 7.304-397.0 | 6kt-Schraube M8x20-8.8-A2E ISO 4017 | 3.000 | ST |
| 20 | 7.305-013.0 | Senkschraube M8x20-8.8-A2R ISO10642 | 1.000 | ST |
| 21 | 6.987-076.0 | Ringschraube M10 | 1.000 | ST |
| 22 | 7.311-006.0 | 6kt-Mutter M10 -8-A3E ISO 4032 | 2.000 | ST |
| 23 | 7.311-008.0 | 6kt-Mutter M12-8-A3E ISO 4032 | 1.000 | ST |
| 24 | 7.304-443.0 | 6kt-Schraube M12x50-8.8-A3E ISO 4017 | 1.000 | ST |
| 25 | 6.987-077.0 | Halter Kolben Klappe | 1.000 | ST |
| 26 | 6.987-086.0 | Gabelkopf | 1.000 | ST |
| 27 | 6.987-078.0 | Zylinder | 1.000 | ST |
| 28 | 7.343-040.0 | Sicherungsring 20x1,2 -St-ph DIN 471 | 1.000 | ST |
| 29 | 6.987-079.0 | Zylinderstift Klappe | 2.000 | ST |
| 30 | 7.307-024.0 | Gew.Stift M6x10 -A2-21H ISO 4027 | 2.000 | ST |
| 31 | 6.988-497.0 | Federstecker d.2 L50 | 2.000 | ST |
| 32 | 6.987-080.0 | Zugfeder D 28 | 1.000 | ST |
| 33 | 6.987-081.0 | Blech Klappe links | 1.000 | ST |

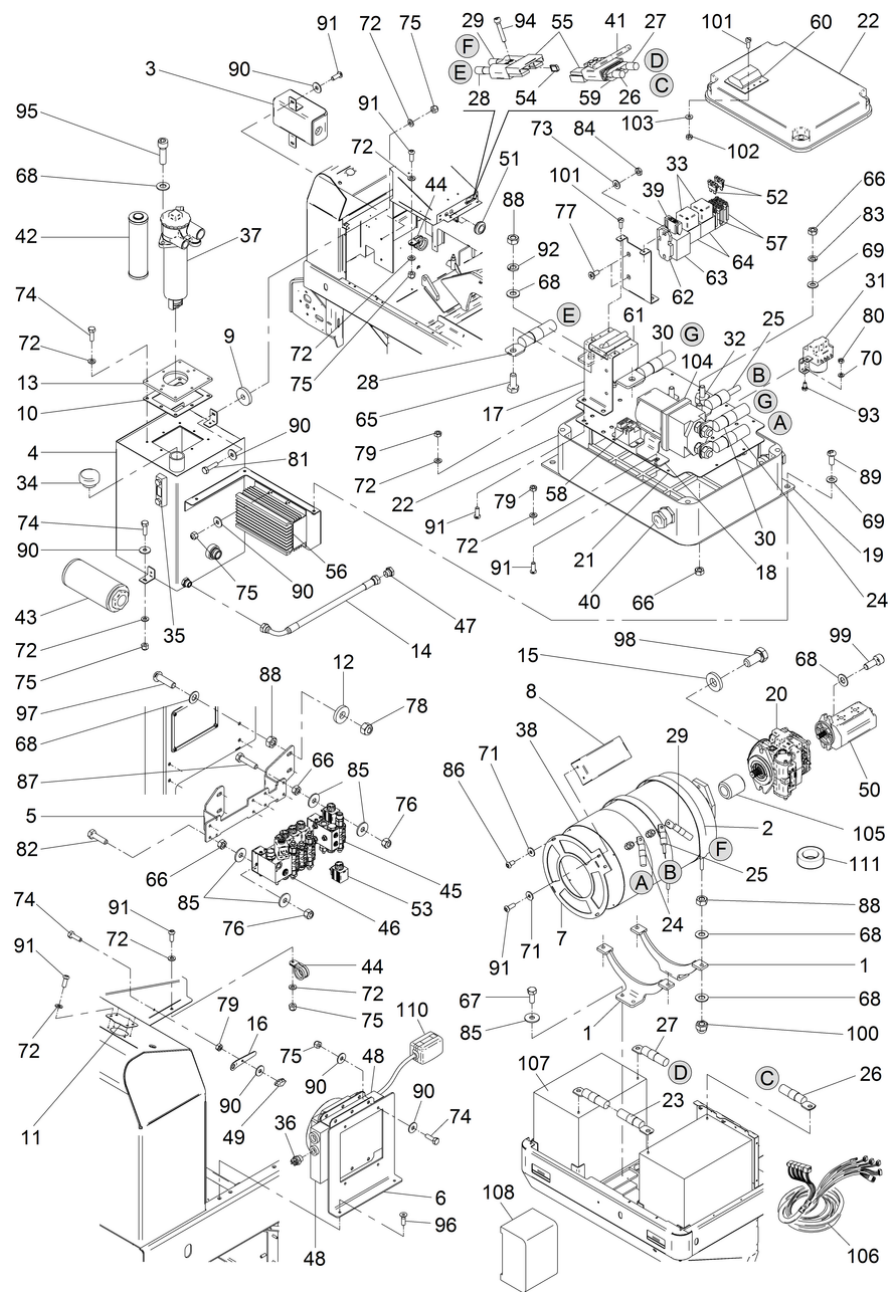
70 Grobschmutzklappe

| POS | Artikelnr. | Beschreibung | Anzahl | Einheit |
|------------|-------------------|---------------------------------------|---------------|----------------|
| 34 | 6.987-082.0 | Blech Klappe rechts | 1.000 | ST |
| 35 | 7.305-103.0 | Senkschraube M6x16 -8.8-A2E ISO 10642 | 6.000 | ST |
| 36 | 7.311-512.0 | 6kt-Mutter M 6-8-A2E ISO 7040 | 6.000 | ST |



80 Geblaese

| POS | Artikelnr. | Beschreibung | Anzahl | Einheit |
|-----|-------------|--------------------------------------|--------|---------|
| 1 | 6.987-874.0 | Halter Geblaesemotor rechts | 1.000 | ST |
| 2 | 6.987-875.0 | Halter Geblaesemotor links | 1.000 | ST |
| 3 | 6.987-876.0 | Luefterrad elektrisch 24 V | 2.000 | ST |
| 4 | 7.311-512.0 | 6kt-Mutter M 6-8-A2E ISO 7040 | 10.000 | ST |
| 5 | 7.312-276.0 | Scheibe 6 -200HV-A2E ISO7093-1 | 8.000 | ST |
| 5 | 7.311-003.0 | 6kt-Mutter M6 -8-A2E ISO 4032 | 6.000 | ST |
| 6 | 7.304-521.0 | 6kt-Schraube M 6x16-A4-70 ISO 4017 | 4.000 | ST |
| 7 | 6.987-877.0 | Halter Sicherung | 2.000 | ST |
| 8 | 7.311-004.0 | 6kt-Mutter M8 -8-A3E ISO 4032 | 2.000 | ST |
| 9 | 7.304-401.0 | 6kt-Schraube M 8x60-8.8-A2E ISO 4017 | 2.000 | ST |
| 10 | 6.987-878.0 | Abdeckung Stecker Geblaese | 2.000 | ST |
| 11 | 7.312-017.0 | Scheibe 8-A2 ISO 7089 | 2.000 | ST |
| 12 | 7.311-510.0 | 6kt-Mutter M 8-8-A2E ISO 7040 | 2.000 | ST |
| 13 | 6.403-078.0 | Gleitlager mit Bund GFM-0506-035 | 12.000 | ST |
| 14 | 7.304-375.0 | 6kt-Schraube M 5x25-8.8-A2E ISO 4017 | 6.000 | ST |
| 15 | 7.312-052.0 | Scheibe 5 -A2 ISO 7089 | 12.000 | ST |
| 16 | 7.311-421.0 | 6kt-Mutter M 5-04-A2E ISO 10511 | 6.000 | ST |
| 17 | 7.311-002.0 | 6kt-Mutter M5 -8-A2E ISO 4032 | 6.000 | ST |
| 18 | 7.312-045.0 | Scheibe 6-200HV-P4E ISO 7089 | 6.000 | ST |
| 19 | 6.988-608.0 | Ferritkern | 1.000 | ST |



90 Elektromotor Einzelteile

| POS | Artikelnr. | Beschreibung | Anzahl | Einheit |
|-----|-------------|-------------------------------|--------|---------|
| 1 | 6.987-883.0 | Halter Elektromotor | 2.000 | ST |
| 2 | 6.987-884.0 | Leiste Fixierung Motor | 2.000 | ST |
| 3 | 6.987-227.0 | Oel Sammel Behaelter | 1.000 | ST |
| 4 | 6.987-885.0 | Oeltank | 1.000 | ST |
| 5 | 6.987-886.0 | Halteblech Verteiler | 1.000 | ST |
| 6 | 6.987-887.0 | Halter Waermetauscher | 1.000 | ST |
| 7 | 6.987-888.0 | Deckel Elektromotor | 1.000 | ST |
| 8 | 6.987-889.0 | Polabdeckung | 1.000 | ST |
| 9 | 5.115-390.0 | Scheibe | 1.000 | ST |
| 10 | 6.987-232.0 | Dichtung Deckel | 1.000 | ST |
| 11 | 6.987-890.0 | Abdeckblech Saugschlauch | 1.000 | ST |
| 12 | 5.250-160.0 | Lagerbuchse Scheibe | 4.000 | ST |
| 13 | 6.987-891.0 | Flansch | 1.000 | ST |
| 14 | 6.987-305.0 | Hydraulikschlauch 1/2" 500 | 1.000 | ST |
| 15 | 5.115-542.0 | Scheibe | 2.000 | ST |
| 16 | 6.987-265.0 | Schluessel Hydraulik | 1.000 | ST |
| 17 | 6.987-892.0 | Halteblech Schalter | 2.000 | ST |
| 18 | 6.987-893.0 | Halter Magnet Schalter | 1.000 | ST |
| 19 | 6.987-894.0 | Platte Magnet Box | 1.000 | ST |
| 20 | 6.987-895.0 | Hydraulikpumpe 2-23 cc | 1.000 | ST |
| 21 | 6.987-896.0 | Befestigungsplatte Elektronik | 1.000 | ST |
| 22 | 6.987-897.0 | Deckel Elektronik Box | 1.000 | ST |
| 23 | 6.987-898.0 | Kabel 1300 mm | 1.000 | ST |
| 24 | 6.987-899.0 | Kabel 1600mm | 1.000 | ST |
| 25 | 6.987-900.0 | Kabel 1500mm | 1.000 | ST |
| 26 | 6.987-901.0 | Kabel 1900mm | 1.000 | ST |
| 27 | 6.987-902.0 | Kabel 1900mm | 1.000 | ST |
| 28 | 6.987-903.0 | Kabel 900mm | 1.000 | ST |
| 29 | 6.987-904.0 | Kabel 2400mm | 1.000 | ST |
| 30 | 6.987-905.0 | Kabel 300mm | 1.000 | ST |
| 31 | 6.987-906.0 | Relais 10D/12V | 1.000 | ST |
| 32 | 6.987-907.0 | Aufnahme Sicherung | 3.000 | ST |
| 33 | 6.987-394.0 | Relais 12V 30/40 A | 2.000 | ST |

90 Elektromotor Einzelteile

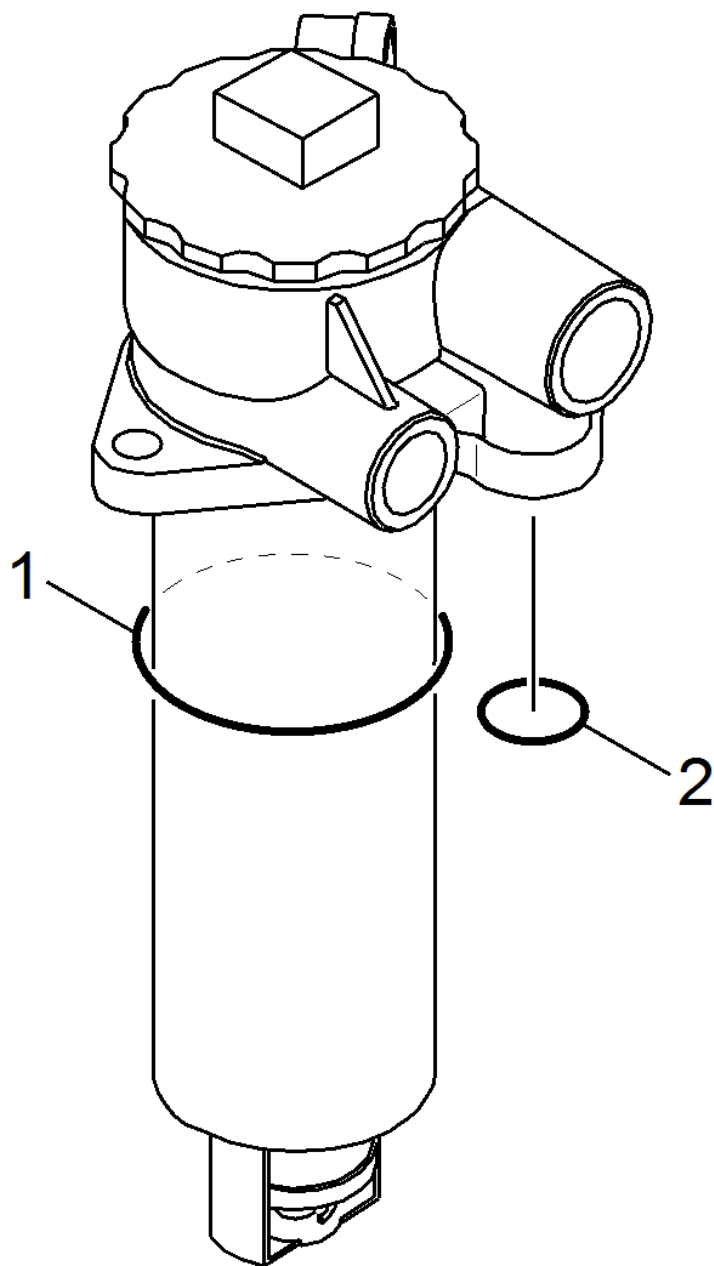
| POS | Artikelnr. | Beschreibung | Anzahl | Einheit |
|-----|-------------|--------------------------------------|--------|---------|
| 34 | 6.987-213.0 | Deckel Oeltank | 1.000 | ST |
| 35 | 6.987-108.0 | Fuellstandsanzeige | 1.000 | ST |
| 36 | 6.987-239.0 | Thermoschalter | 1.000 | ST |
| 37 | 6.987-233.0 | Oelfilter | 1.000 | ST |
| 38 | 6.987-908.0 | Elektromotor | 1.000 | ST |
| 39 | 6.644-278.0 | Sicherungseinsatz -30A | 1.000 | ST |
| 40 | 6.987-920.0 | Kabelverschraubung PG 16 | 5.000 | ST |
| 41 | 6.987-909.0 | Griff Steckverbinder | 1.000 | ST |
| 42 | 6.987-377.0 | Filter Element | 1.000 | ST |
| 43 | 6.987-234.0 | Saugfilter | 1.000 | ST |
| 44 | 6.373-655.0 | Rohrschelle D30 | 2.000 | ST |
| 45 | 6.987-347.0 | Steuerblock 1-teilig | 1.000 | ST |
| 46 | 6.987-346.0 | Verteilerblock 3-teilig | 1.000 | ST |
| 47 | 6.987-236.0 | Kappe | 1.000 | ST |
| 48 | 6.987-910.0 | Waermetauscher Oel | 1.000 | ST |
| 49 | 6.987-264.0 | Knopf rot M6 | 1.000 | ST |
| 50 | 6.987-911.0 | Zahnradpumpe | 1.000 | ST |
| 51 | 6.648-230.0 | Durchfuehrungstuelle | 2.000 | ST |
| 52 | 7.644-006.0 | Sicherungseinsatz C 3 DIN 72581-3 | 2.000 | ST |
| 53 | 6.987-586.0 | Magnetventil | 1.000 | ST |
| 54 | 6.987-918.0 | Stecker Kodierung | 1.000 | ST |
| 55 | 6.987-912.0 | Steckverbinder | 2.000 | ST |
| 56 | 6.987-913.0 | Stromwandler | 1.000 | ST |
| 57 | 6.987-914.0 | Sicherungshalter | 2.000 | ST |
| 58 | 6.987-915.0 | Relais 48V30A | 1.000 | ST |
| 59 | 6.987-916.0 | Verriegelung Kabel | 1.000 | ST |
| 60 | 6.987-917.0 | Schutzkappe | 1.000 | ST |
| 61 | 6.987-922.0 | Ueberhitzungsschutz 330Ah | 1.000 | ST |
| 62 | 6.987-923.0 | Sicherungseinsatz | 1.000 | ST |
| 63 | 6.987-924.0 | Sicherungshalter | 1.000 | ST |
| 64 | 6.987-925.0 | Relais Halter mini | 2.000 | ST |
| 65 | 7.304-415.0 | 6kt-Schraube M10x25-8.8-A3E ISO 4017 | 2.000 | ST |
| 66 | 7.311-004.0 | 6kt-Mutter M8 -8-A3E ISO 4032 | 12.000 | ST |

90 Elektromotor Einzelteile

| POS | Artikelnr. | Beschreibung | Anzahl | Einheit |
|-----|-------------|---------------------------------------|--------|---------|
| 67 | 7.304-397.0 | 6kt-Schraube M8x20-8.8-A2E ISO 4017 | 4.000 | ST |
| 68 | 7.312-005.0 | Scheibe 10-200HV-A3E ISO 7090 | 18.000 | ST |
| 69 | 7.312-017.0 | Scheibe 8-A2 ISO 7089 | 4.000 | ST |
| 70 | 7.312-052.0 | Scheibe 5 -A2 ISO 7089 | 2.000 | ST |
| 71 | 7.312-278.0 | Scheibe 5-200HV-A2E ISO7093-1 | 6.000 | ST |
| 72 | 7.312-045.0 | Scheibe 6-200HV-P4E ISO 7089 | 24.000 | ST |
| 73 | 7.312-001.0 | Scheibe 4 -200HV-A3E ISO 7089 | 2.000 | ST |
| 74 | 7.304-536.0 | 6kt-Schraube M 6x20-A4-70 ISO 4017 | 14.000 | ST |
| 75 | 7.311-512.0 | 6kt-Mutter M 6-8-A2E ISO 7040 | 12.000 | ST |
| 76 | 7.311-510.0 | 6kt-Mutter M 8-8-A2E ISO 7040 | 8.000 | ST |
| 77 | 6.305-001.0 | Senkschraube M 4X 10-A2 ISO 7046-2 | 2.000 | ST |
| 78 | 7.311-511.0 | 6kt-Mutter M10-8-A2E ISO 7040 | 4.000 | ST |
| 79 | 7.311-003.0 | 6kt-Mutter M6 -8-A2E ISO 4032 | 7.000 | ST |
| 80 | 7.311-002.0 | 6kt-Mutter M5 -8-A2E ISO 4032 | 2.000 | ST |
| 81 | 7.304-509.0 | 6kt-Schraube M 6x25-A4-70 ISO 4017 | 1.000 | ST |
| 82 | 7.304-400.0 | 6kt-Schraube M 8x30-8.8-A2E ISO 4017 | 4.000 | ST |
| 83 | 7.313-004.0 | Federring B 8-FSt-A3E DIN 127 | 1.000 | ST |
| 84 | 7.311-001.0 | 6kt-Mutter M4 -8-A2E ISO 4032 | 2.000 | ST |
| 85 | 7.312-277.0 | Scheibe 8-200HV-A2E ISO7093-1 | 20.000 | ST |
| 86 | 7.306-087.0 | Schraube M6x10 -8.8-R3R (In6Rd) | 4.000 | ST |
| 87 | 7.304-406.0 | 6kt-Schraube M 8x35-8.8-A2E ISO 4017 | 4.000 | ST |
| 88 | 7.311-006.0 | 6kt-Mutter M10 -8-A3E ISO 4032 | 12.000 | ST |
| 89 | 6.304-168.0 | Linsenschraube IN-6kt M8x20 A2-70 | 3.000 | ST |
| 90 | 7.312-276.0 | Scheibe 6 -200HV-A2E ISO7093-1 | 17.000 | ST |
| 91 | 7.306-090.0 | Schraube M6x16 -8.8-R3R (In6Rd) | 16.000 | ST |
| 92 | 7.313-005.0 | Federring B10-FSt-A3E DIN 127 | 2.000 | ST |
| 93 | 7.304-539.0 | 6kt-Schraube M 5x10-A4-70 ISO 4017 | 2.000 | ST |
| 94 | 7.306-025.0 | Zyl.Schr. M 6x35-8.8-A2E ISO4762 | 4.000 | ST |
| 95 | 7.306-074.0 | Zyl.Schr. M10x35-8.8-A3E ISO4762 | 2.000 | ST |
| 96 | 7.305-032.0 | Senkschraube M6x20-ST-8.8-A2R (IN6RD) | 2.000 | ST |
| 97 | 7.306-224.0 | Schraube M10x35-A2-70 DIN 7984 | 4.000 | ST |
| 98 | 7.306-224.0 | Schraube M10x35-A2-70 DIN 7984 | 2.000 | ST |
| 99 | 7.306-243.0 | Zyl.Schr. M10x25 -A4-70 ISO 4762 | 2.000 | ST |

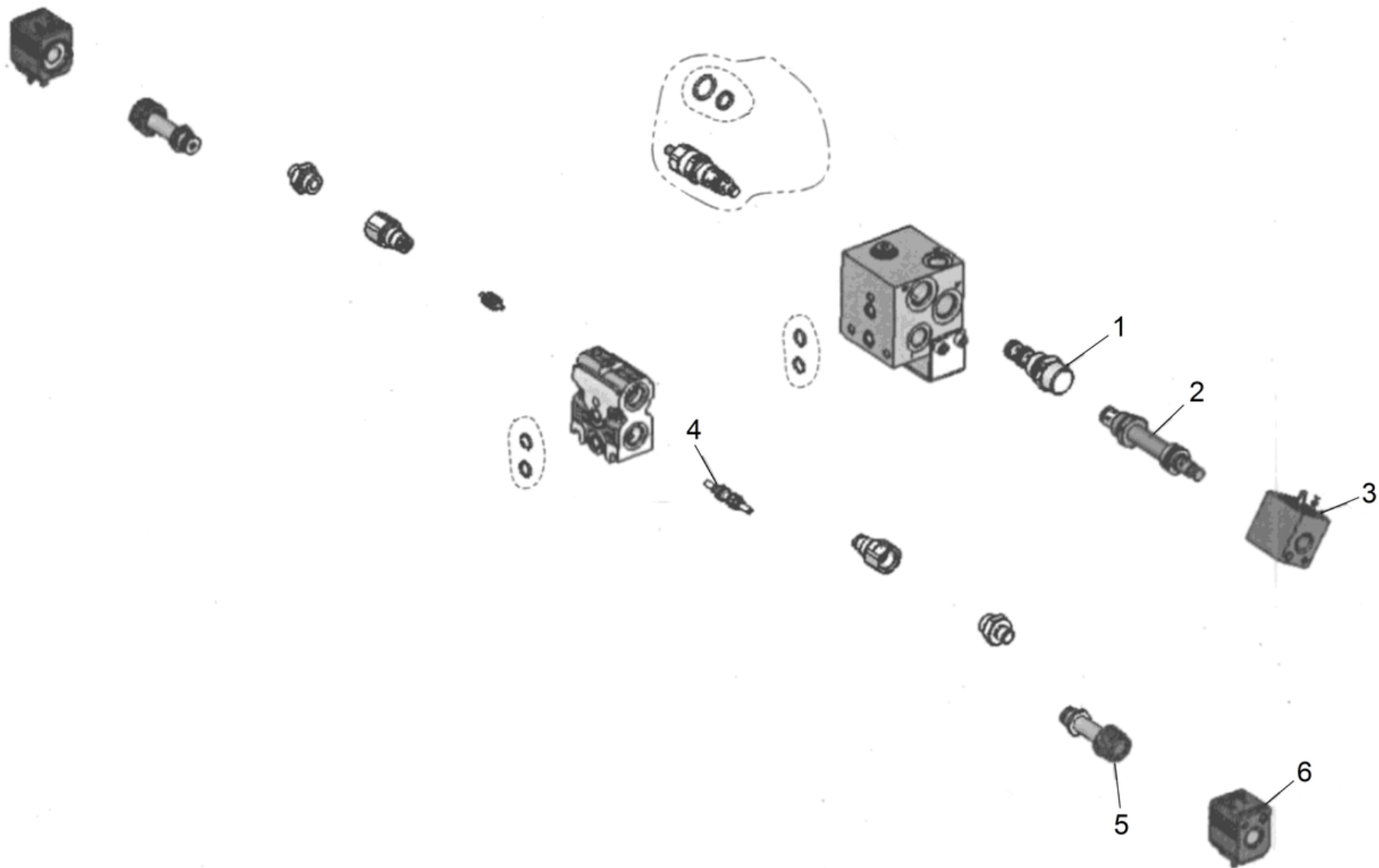
90 Elektromotor Einzelteile

| POS | Artikelnr. | Beschreibung | Anzahl | Einheit |
|------------|-------------------|--------------------------------|---------------|----------------|
| 100 | 7.311-382.0 | Hutmutter M10-6-A3E DIN 1587 | 2.000 | ST |
| 101 | 7.306-248.0 | Zyl.Schr. M3x10-PA6.6 ISO 1207 | 10.000 | ST |
| 102 | 7.311-004.0 | 6kt-Mutter M8 -8-A3E ISO 4032 | 6.000 | ST |
| 103 | 7.312-043.0 | Scheibe 3-A2 ISO 7089 | 6.000 | ST |
| 104 | 6.987-919.0 | Relais 48 V | 1.000 | ST |
| 105 | 6.987-921.0 | Kupplung | 1.000 | ST |
| 106 | 6.987-926.0 | Kabelsatz KM 150/500 Bat | 1.000 | ST |
| 107 | 6.654-280.0 | Batterie 48V-700Ah | 1.000 | ST |
| 108 | 6.654-281.0 | Ladegeraet 3-phasig 48V-80A | 1.000 | ST |
| 110 | 6.988-609.0 | Ferritkern | 1.000 | ST |
| 111 | 6.988-610.0 | Ferritring R5618X | 1.000 | ST |



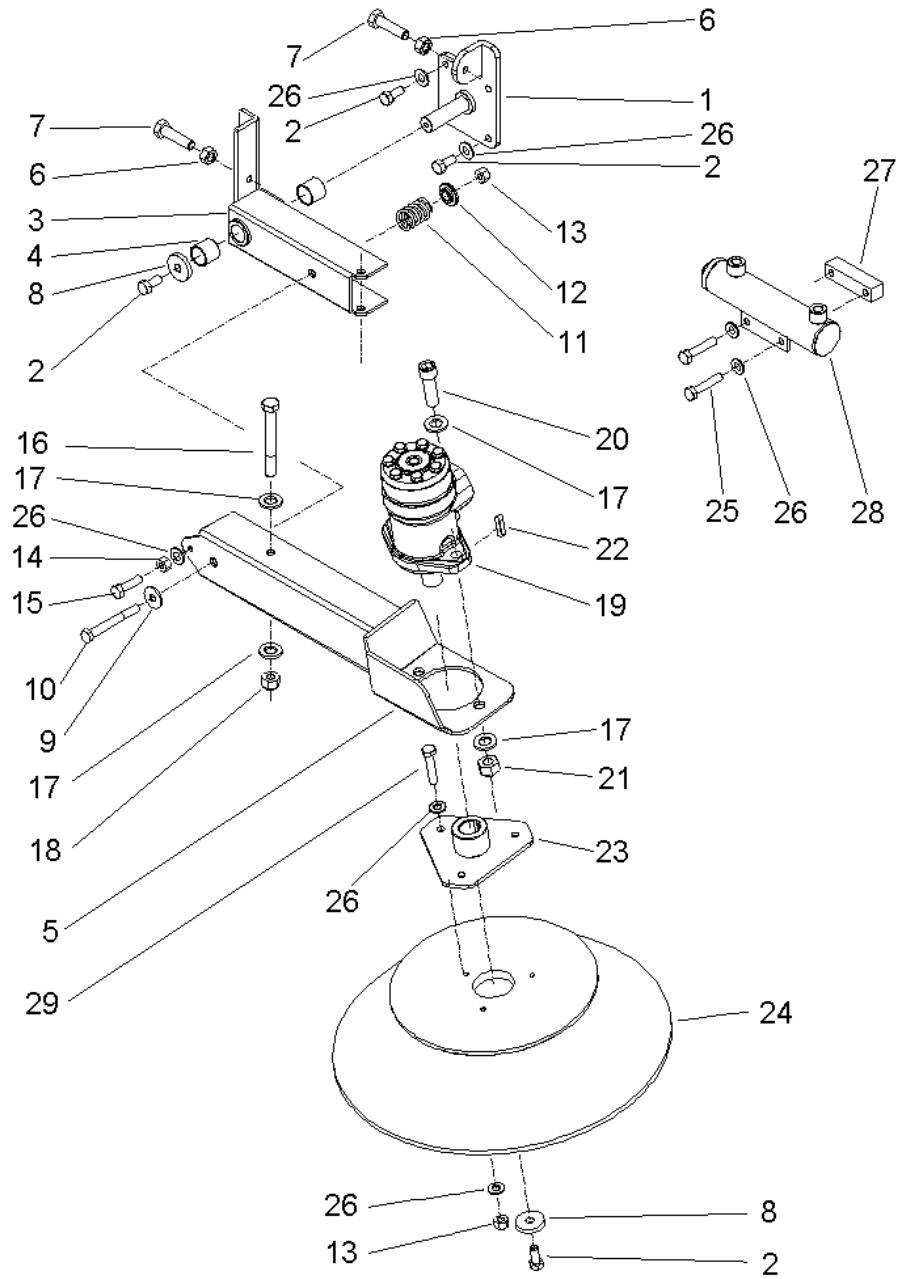
37 Oelfilter (6.987-233.0)

| POS | Artikelnr. | Beschreibung | Anzahl | Einheit |
|------------|-------------------|---------------------|---------------|----------------|
| 1 | 6.362-192.0 | O-Ring 85,32X 3,53 | 1.000 | ST |
| 2 | 6.025-059.0 | O-Ring 22x3,5mm | 1.000 | ST |



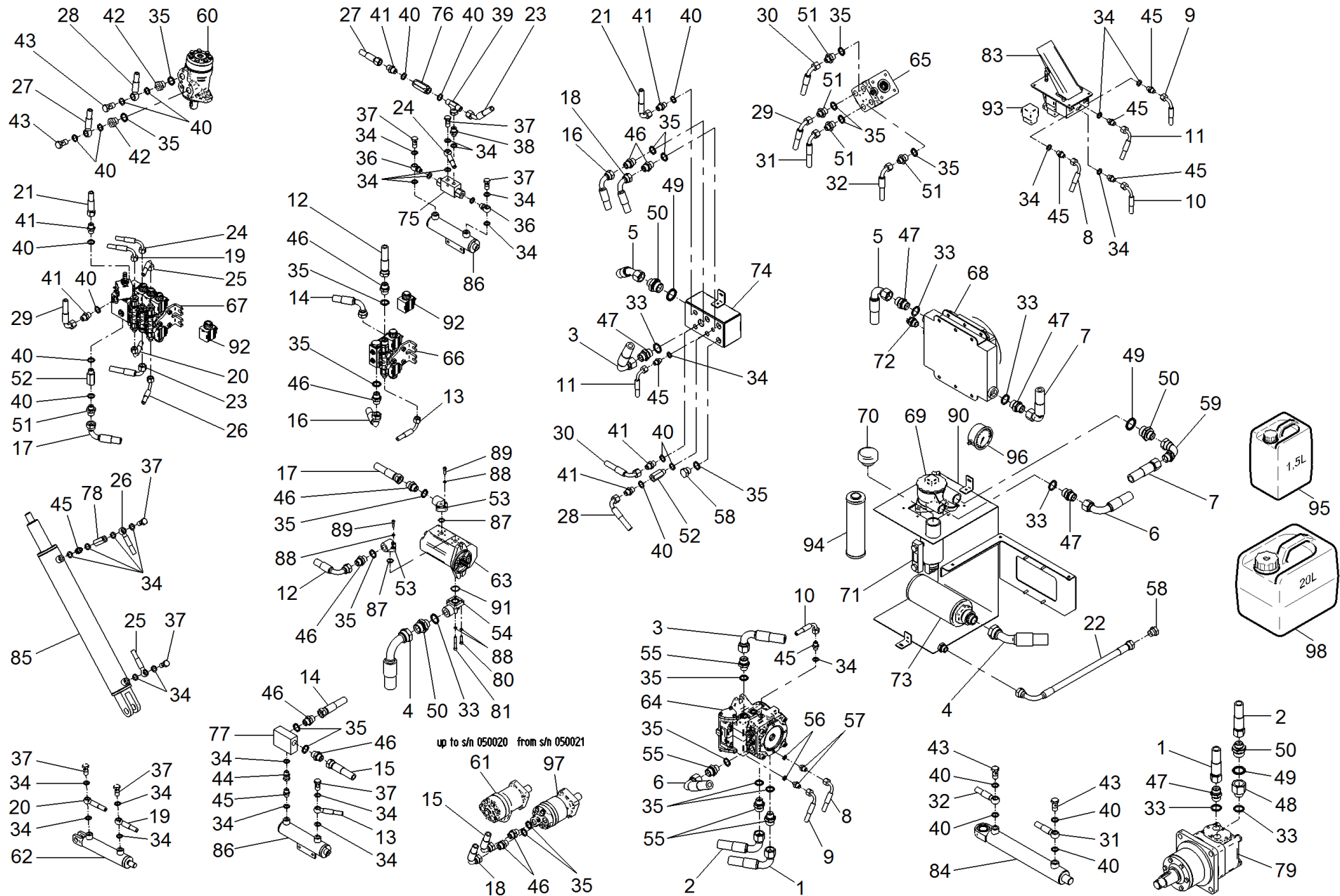
46 Verteilerblock 3-teilig (6.987-346.0)

| POS | Artikelnr. | Beschreibung | Anzahl | Einheit |
|------------|-------------------|---------------------|---------------|----------------|
| 1 | 6.988-773.0 | Drossel | 1.000 | ST |
| 2 | 6.988-772.0 | Ventil Schieber | 1.000 | ST |
| 3 | 6.988-770.0 | Spule 12V DC 30W | 1.000 | ST |
| 4 | 6.988-774.0 | Ventilstange | 3.000 | ST |
| 5 | 6.988-771.0 | Ventil Einstellung | 6.000 | ST |
| 6 | 6.987-586.0 | Magnetventil | 6.000 | ST |



100 Seitenbesen

| POS | Artikelnr. | Beschreibung | Anzahl | Einheit |
|-----|-------------|--------------------------------------|--------|---------|
| 1 | 6.987-027.0 | Aufnahme Seitenbesen rechts | 1.000 | ST |
| 2 | 7.304-397.0 | 6kt-Schraube M8x20-8.8-A2E ISO 4017 | 6.000 | ST |
| 3 | 6.987-028.0 | Arm Seitenbesen rechts | 1.000 | ST |
| 4 | 6.987-029.0 | Buchse | 2.000 | ST |
| 5 | 6.987-030.0 | Aufhaengung Seitenbesen rechts | 1.000 | ST |
| 6 | 7.311-006.0 | 6kt-Mutter M10 -8-A3E ISO 4032 | 2.000 | ST |
| 7 | 7.304-032.0 | 6kt-Schraube M10x40-8.8-A3E ISO 4017 | 2.000 | ST |
| 8 | 5.115-390.0 | Scheibe | 2.000 | ST |
| 9 | 7.312-277.0 | Scheibe 8-200HV-A2E ISO7093-1 | 1.000 | ST |
| 10 | 7.304-096.0 | 6kt-Schraube M8x60-8.8-A2E ISO 4014 | 1.000 | ST |
| 11 | 6.987-031.0 | Feder | 1.000 | ST |
| 12 | 6.987-032.0 | Scheibe Federfuehrung | 1.000 | ST |
| 13 | 7.311-510.0 | 6kt-Mutter M 8-8-A2E ISO 7040 | 4.000 | ST |
| 14 | 7.311-004.0 | 6kt-Mutter M8 -8-A3E ISO 4032 | 1.000 | ST |
| 15 | 7.304-400.0 | 6kt-Schraube M 8x30-8.8-A2E ISO 4017 | 1.000 | ST |
| 16 | 7.304-125.0 | 6kt-Schraube M8x85 -8.8-A2E ISO 4014 | 1.000 | ST |
| 17 | 7.312-008.0 | Scheibe 12-200HV-A3E ISO 7090 | 6.000 | ST |
| 18 | 7.311-511.0 | 6kt-Mutter M10-8-A2E ISO 7040 | 1.000 | ST |
| 19 | 6.987-033.0 | Hydraulikmotor | 1.000 | ST |
| 20 | 6.987-280.0 | Zylinderschraube M12x40 ISO4762 | 2.000 | ST |
| 21 | 6.987-382.0 | Schutzring Seitenbesen | 2.000 | ST |
| 22 | 7.318-042.0 | Passfeder 8x7x32-C45R DIN 6885 | 1.000 | ST |
| 23 | 6.987-034.0 | Nabe Seitenbesen | 1.000 | ST |
| 24 | 6.987-083.0 | Seitenbesen Standard | 1.000 | ST |
| 24 | 6.905-773.0 | Seitenbesen hart | 1.000 | ST |
| 24 | 6.905-619.0 | Seitenbesen Stahl | 1.000 | ST |
| 24 | 6.905-620.0 | Seitenbesen weich | 1.000 | ST |
| 25 | 7.304-404.0 | 6kt-Schraube M8x40-8.8-A2E ISO 4017 | 2.000 | ST |
| 26 | 7.312-017.0 | Scheibe 8-A2 ISO 7089 | 13.000 | ST |
| 27 | 6.987-035.0 | Lager Zylinder EN ISO 4762 | 1.000 | ST |
| 28 | 6.987-036.0 | Zylinder Seitenbesen | 1.000 | ST |
| 29 | 6.996-959.0 | Senkschraube M 8x40 | 3.000 | ST |



110 Hydraulik-Schema

| POS | Artikelnr. | Beschreibung | Anzahl | Einheit | Werknummer ab | Werknummer bis | Fußnotentext |
|-----|-------------|-----------------------------|--------|---------|---------------|----------------|--------------|
| 1 | 6.987-932.0 | Hydraulikschlauch 3/4" 800 | 1.000 | ST | | | |
| 2 | 6.987-933.0 | Hydraulikschlauch 3/4" 850 | 1.000 | ST | | | |
| 3 | 6.987-934.0 | Hydraulikschlauch 3/4" 1000 | 1.000 | ST | | | |
| 4 | 6.987-935.0 | Hydraulikschlauch 1" 700 | 1.000 | ST | | | |
| 5 | 6.987-936.0 | Hydraulikschlauch 3/4" 1000 | 1.000 | ST | | | |
| 6 | 6.987-937.0 | Hydraulikschlauch 3/4" 1100 | 1.000 | ST | | | |
| 7 | 6.987-938.0 | Hydraulikschlauch 3/4" 1250 | 1.000 | ST | | | |
| 8 | 6.987-939.0 | Hydraulikschlauch 1/4" 1200 | 1.000 | ST | | | |
| 9 | 6.987-940.0 | Hydraulikschlauch 1/4" 1400 | 1.000 | ST | | | |
| 10 | 6.987-941.0 | Hydraulikschlauch 1/4" 1350 | 1.000 | ST | | | |
| 11 | 6.987-942.0 | Hydraulikschlauch 1/4" 1450 | 1.000 | ST | | | |
| 12 | 6.987-943.0 | Hydraulikschlauch 1/2" 300 | 1.000 | ST | | | |
| 13 | 6.987-944.0 | Hydraulikschlauch 1/4" 1250 | 1.000 | ST | | | |
| 14 | 6.987-945.0 | Hydraulikschlauch 1/2" 1200 | 1.000 | ST | | | |
| 15 | 6.987-946.0 | Hydraulikschlauch 1/2" 1100 | 1.000 | ST | | | |
| 16 | 6.987-947.0 | Hydraulikschlauch 1/2" 850 | 1.000 | ST | | | |
| 17 | 6.987-948.0 | Hydraulikschlauch 1/2" 600 | 1.000 | ST | | | |
| 18 | 6.987-949.0 | Hydraulikschlauch 1/2" 1900 | 1.000 | ST | | | |
| 19 | 6.987-950.0 | Hydraulikschlauch 1/4" 2200 | 1.000 | ST | | | |
| 20 | 6.987-951.0 | Hydraulikschlauch 1/4" 2500 | 1.000 | ST | | | |
| 21 | 6.987-952.0 | Hydraulikschlauch 3/8" 700 | 1.000 | ST | | | |
| 22 | 6.987-305.0 | Hydraulikschlauch 1/2" 500 | 1.000 | ST | | | |
| 23 | 6.987-953.0 | Hydraulikschlauch 3/8" 2500 | 1.000 | ST | | | |
| 24 | 6.987-954.0 | Hydraulikschlauch 1/4" 2550 | 1.000 | ST | | | |
| 25 | 6.987-955.0 | Hydraulikschlauch 1/4" 1000 | 1.000 | ST | | | |
| 26 | 6.987-956.0 | Hydraulikschlauch 1/4" 800 | 1.000 | ST | | | |
| 27 | 6.987-957.0 | Hydraulikschlauch 3/8" 500 | 1.000 | ST | | | |
| 28 | 6.987-958.0 | Hydraulikschlauch 3/8" 2850 | 1.000 | ST | | | |
| 29 | 6.987-959.0 | Hydraulikschlauch 3/8" 1500 | 1.000 | ST | | | |
| 30 | 6.987-960.0 | Hydraulikschlauch 3/8" 2100 | 1.000 | ST | | | |
| 31 | 6.987-961.0 | Hydraulikschlauch 3/8" 1850 | 1.000 | ST | | | |
| 32 | 6.987-962.0 | Hydraulikschlauch 3/8" 1700 | 1.000 | ST | | | |
| 33 | 6.987-339.0 | Dichtscheibe 3/4" | 7.000 | ST | | | |

110 Hydraulik-Schema

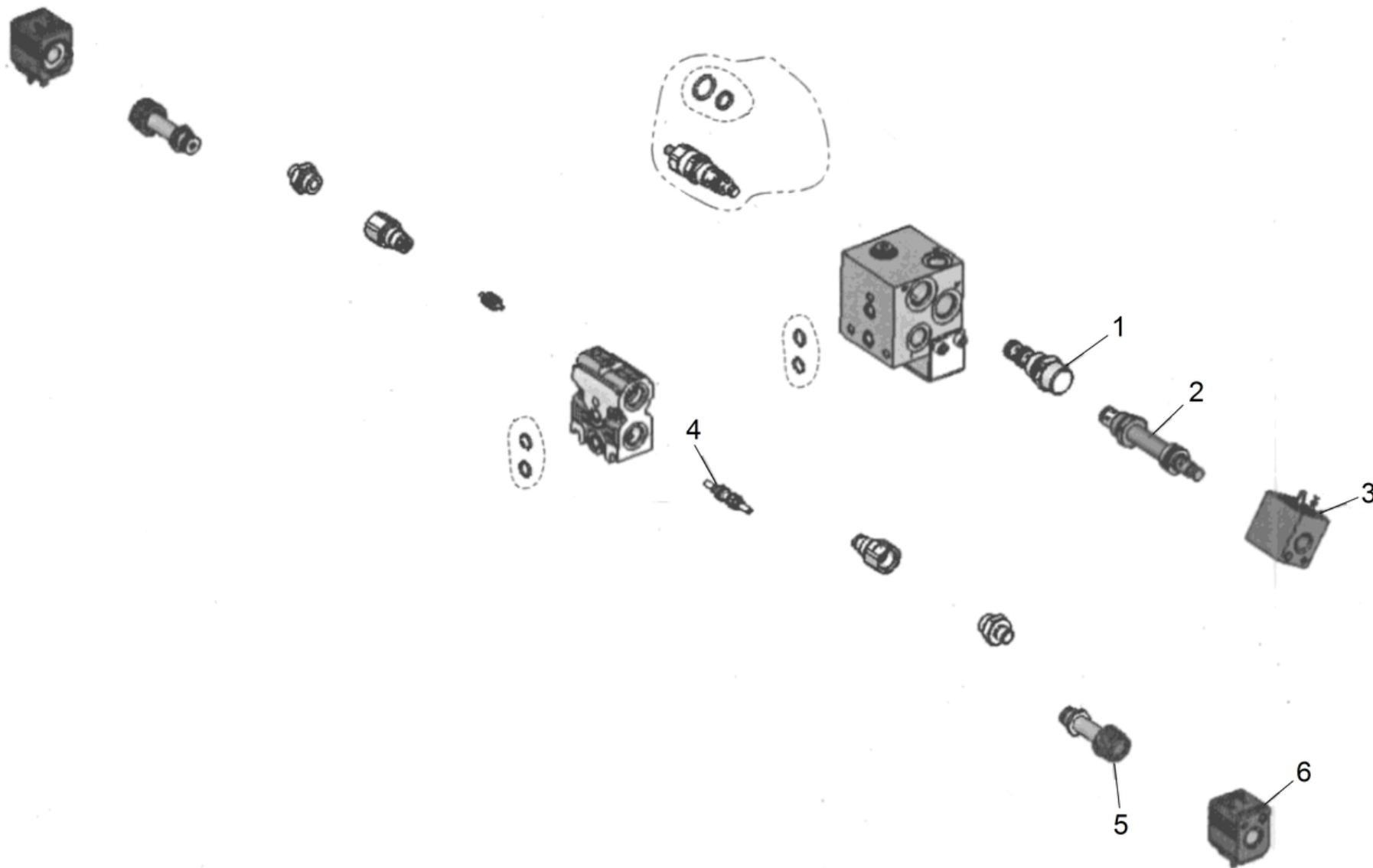
| POS | Artikelnr. | Beschreibung | Anzahl | Einheit | Werknummer ab | Werknummer bis | Fußnotentext |
|-----|-------------|-------------------------------|--------|---------|---------------|----------------|--------------|
| 34 | 6.987-276.0 | Dichtscheibe 1/4" | 29.000 | ST | | | |
| 35 | 6.987-338.0 | Dichtscheibe 1/2" | 21.000 | ST | | | |
| 36 | 6.987-332.0 | Augenschraube 1/4" | 2.000 | ST | | | |
| 37 | 6.987-320.0 | Rohrverschraubung 1/4" | 8.000 | ST | | | |
| 38 | 6.987-323.0 | Schlauchstutzen 1/4" | 1.000 | ST | | | |
| 39 | 6.987-318.0 | T-Verschraubung 3/8" | 1.000 | ST | | | |
| 40 | 6.987-340.0 | Dichtscheibe 3/8" | 18.000 | ST | | | |
| 41 | 6.987-331.0 | Schlauchstutzen G3/8" | 6.000 | ST | | | |
| 42 | 6.987-322.0 | Reduzierstutzen 1/2"-3/8" | 2.000 | ST | | | |
| 43 | 6.987-321.0 | Rohrverschraubung 3/8" | 4.000 | ST | | | |
| 44 | 6.987-335.0 | Reduzierstutzen 1/4" | 1.000 | ST | | | |
| 45 | 6.987-326.0 | Schlauchstutzen 1/4" | 8.000 | ST | | | |
| 46 | 6.987-330.0 | Schlauchstutzen G1/2" | 10.000 | ST | | | |
| 47 | 6.987-328.0 | Schlauchstutzen 3/4" | 5.000 | ST | | | |
| 48 | 6.987-336.0 | Reduzierstueck 3/4" | 1.000 | ST | | | |
| 49 | 6.987-341.0 | Dichtscheibe | 3.000 | ST | | | |
| 50 | 6.987-327.0 | Schlauchstutzen 3/4"-1" | 4.000 | ST | | | |
| 51 | 6.987-329.0 | Schlauchstutzen 3/8"-1/2" | 5.000 | ST | | | |
| 52 | 6.987-333.0 | Gewindestutzen M-F3/8" | 2.000 | ST | | | |
| 53 | 6.987-084.0 | Winkelstueck | 2.000 | ST | | | |
| 54 | 6.987-334.0 | Verbindungsstueck Pumpe G 1/4 | 1.000 | ST | | | |
| 55 | 6.987-325.0 | Schlauchstutzen 1/2"-3/4" | 4.000 | ST | | | |
| 56 | 6.987-337.0 | Dichtscheibe | 2.000 | ST | | | |
| 57 | 6.987-319.0 | Schlauchstutzen 1/4"-1/8" | 2.000 | ST | | | |
| 58 | 6.987-236.0 | Kappe | 2.000 | ST | | | |
| 59 | 6.987-931.0 | Winkelstutzen | 1.000 | ST | | | |
| 60 | 6.987-033.0 | Hydraulikmotor | 1.000 | ST | | | |
| 61 | 6.987-881.0 | Hydraulikmotor | 1.000 | ST | | 50020 | |
| 62 | 6.987-078.0 | Zylinder | 1.000 | ST | | | |
| 63 | 6.987-911.0 | Zahnradpumpe | 1.000 | ST | | | |
| 64 | 6.988-789.0 | Hydraulikpumpe 4201776 | 1.000 | ST | | | |
| 65 | 6.987-023.0 | Lenkung | 1.000 | ST | | | |

110 Hydraulik-Schema

| POS | Artikelnr. | Beschreibung | Anzahl | Einheit | Werknummer ab | Werknummer bis | Fußnotentext |
|-----|-------------|--|--------|---------|---------------|----------------|-------------------|
| 66 | 6.987-347.0 | Steuerblock 1-teilig | 1.000 | ST | | | |
| 67 | 6.987-346.0 | Verteilerblock 3-teilig | 1.000 | ST | | | |
| 68 | 6.987-910.0 | Waermetauscher Oel | 1.000 | ST | | | |
| 69 | 6.987-233.0 | Oelfilter | 1.000 | ST | | | |
| 70 | 6.987-213.0 | Deckel Oeltank | 1.000 | ST | | | |
| 71 | 6.987-108.0 | Fuellstandsanzeige | 1.000 | ST | | | |
| 72 | 6.987-239.0 | Thermoschalter | 1.000 | ST | | | |
| 73 | 6.987-234.0 | Saugfilter | 1.000 | ST | | | |
| 74 | 6.987-227.0 | Oel Sammel Behaelter | 1.000 | ST | | | |
| 75 | 6.987-235.0 | Ventilblock 1/4" | 1.000 | ST | | | |
| 76 | 6.987-366.0 | Rueckschlagventil 3/8"11bar | 1.000 | ST | | | |
| 77 | 6.987-367.0 | Steuerblock | 1.000 | ST | | | |
| 78 | 6.987-368.0 | Rueckschlagventil 1/4" | 1.000 | ST | | | |
| 79 | 6.987-879.0 | Hydraulikmotor | 1.000 | ST | | | |
| 80 | 7.306-023.0 | Zyl.Schr. M6x25 -8.8-A2E ISO4762 | 2.000 | ST | | | |
| 81 | 7.306-026.0 | Zyl.Schr. M 6x45-8.8-A2E DIN 912 | 2.000 | ST | | | |
| 83 | 6.987-369.0 | Pedal elektron. hydraulisch 4201607 | 1.000 | ST | | | |
| 84 | 6.987-020.0 | Hydraulikzylinder Lenkung | 1.000 | ST | | | |
| 85 | 6.987-151.0 | Hydraulikzylinder | 1.000 | ST | | | |
| 86 | 6.987-036.0 | Zylinder Seitenbesen | 2.000 | ST | | | |
| 87 | 6.987-378.0 | O-Ring NBR 2,62x15,88 | 2.000 | ST | | | |
| 88 | 7.313-003.0 | Federring B 6-FSt-A3E DIN 127 | 10.000 | ST | | | |
| 89 | 7.306-022.0 | Zyl.Schr. M 6x20-8.8-A2E ISO4762 | 6.000 | ST | | | |
| 90 | 6.987-885.0 | Oeltank | 1.000 | ST | | | |
| 91 | 6.987-379.0 | O-Ring NBR 2,62x23,8- | 1.000 | ST | | | |
| 92 | 6.987-586.0 | Magnetventil | 8.000 | ST | | | |
| 93 | 6.988-837.0 | Magnetventil | 2.000 | ST | | | |
| 94 | 6.987-377.0 | Filter Element | 1.000 | ST | | | |
| 95 | 4.070-306.0 | Hydraulikoel 1,5 L | 1.000 | ST | | | EINFUELLMENGE 35L |
| 96 | 6.988-706.0 | Manometer | 1.000 | ST | | | |

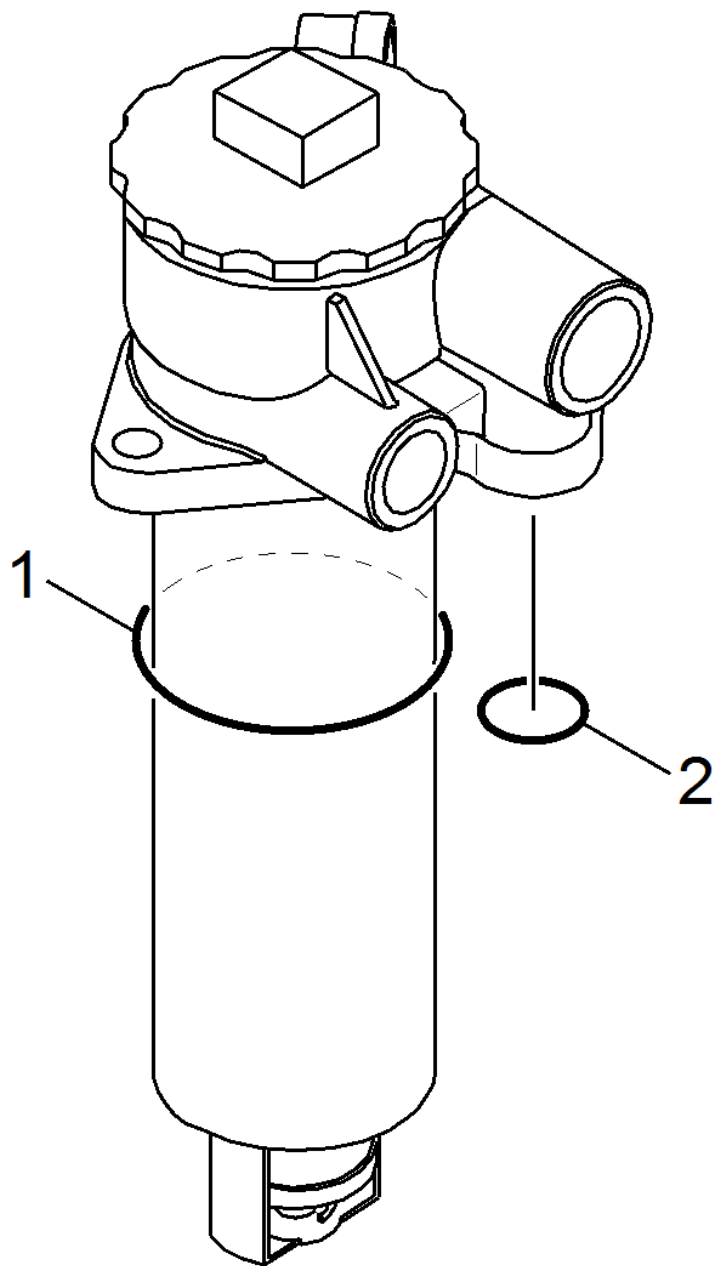
110 Hydraulik-Schema

| POS | Artikelnr. | Beschreibung | Anzahl | Einheit | Werknummer ab | Werknummer bis | Fußnotentext |
|------------|-------------------|---|---------------|----------------|----------------------|-----------------------|---------------------|
| 97 | 6.988-768.0 | Hydraulikmotor KM 150/500 R Bp 4212298 | 1.000 | ST | 50021 | | |
| 98 | 6.961-611.0 | Hydraulikoel 20L | 1.000 | ST | | | EINFUELLMENGE 35L |



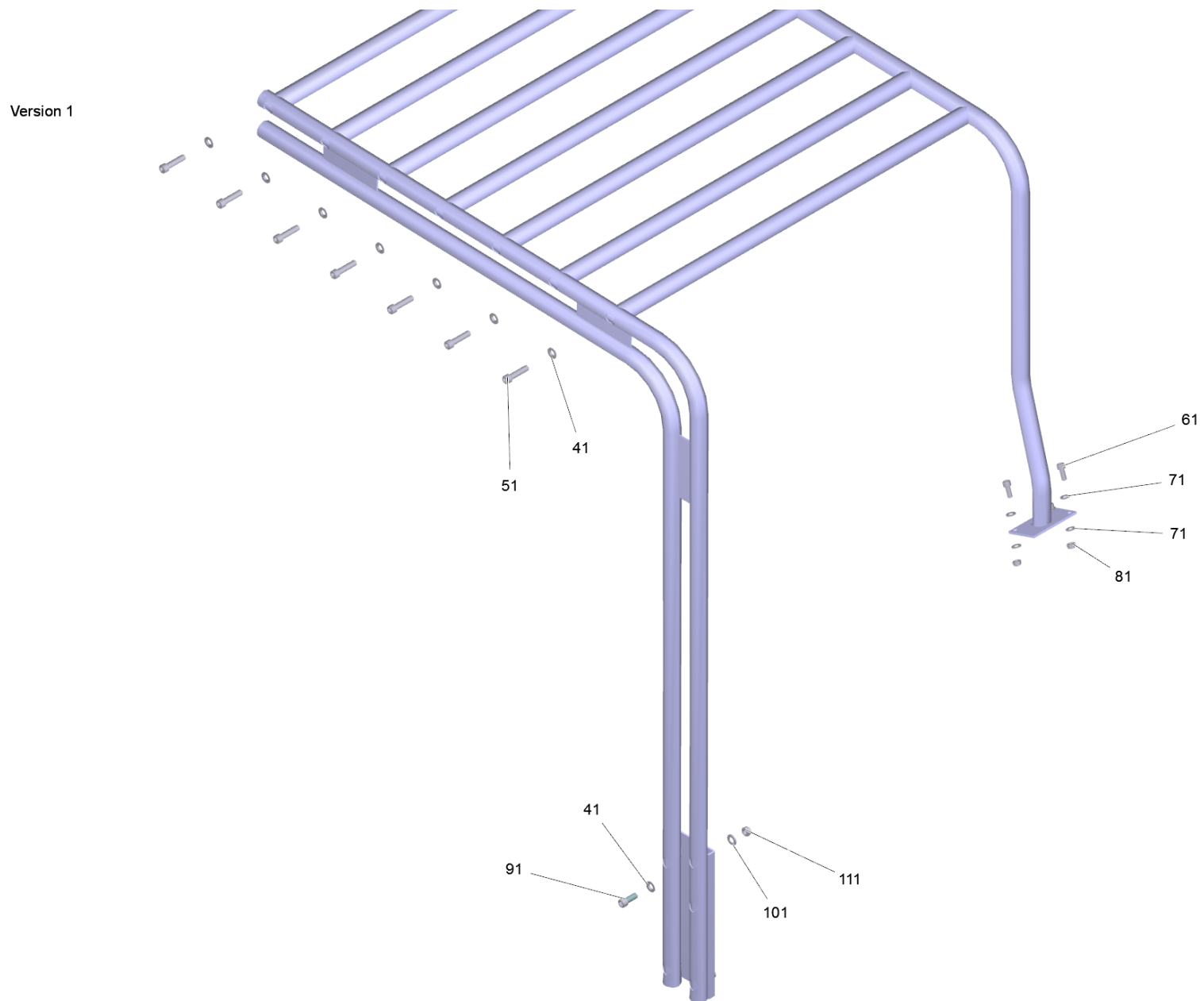
67 Verteilerblock 3-teilig (6.987-346.0)

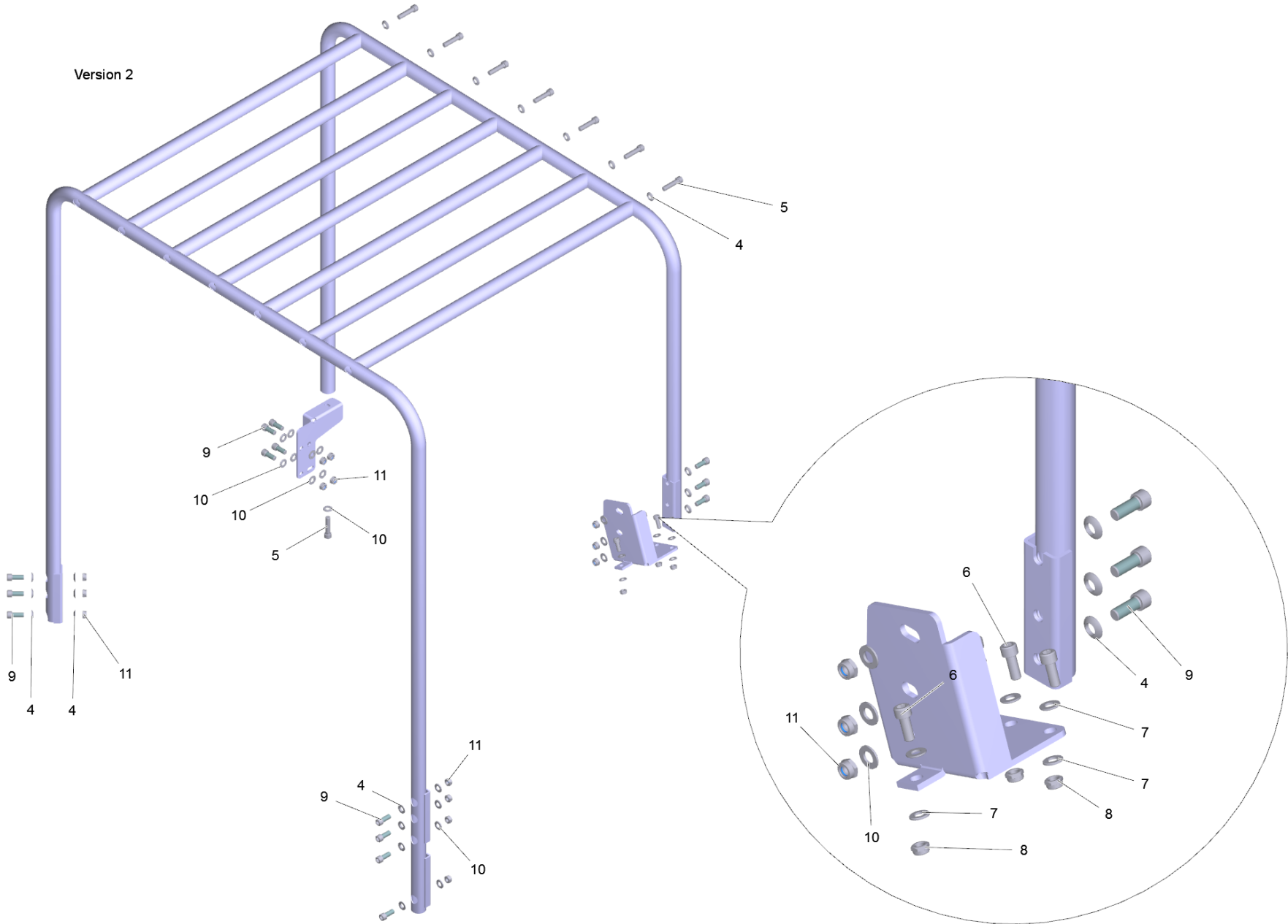
| POS | Artikelnr. | Beschreibung | Anzahl | Einheit |
|------------|-------------------|---------------------|---------------|----------------|
| 1 | 6.988-773.0 | Drossel | 1.000 | ST |
| 2 | 6.988-772.0 | Ventil Schieber | 1.000 | ST |
| 3 | 6.988-770.0 | Spule 12V DC 30W | 1.000 | ST |
| 4 | 6.988-774.0 | Ventilstange | 3.000 | ST |
| 5 | 6.988-771.0 | Ventil Einstellung | 6.000 | ST |
| 6 | 6.987-586.0 | Magnetventil | 6.000 | ST |



69 Oelfilter (6.987-233.0)

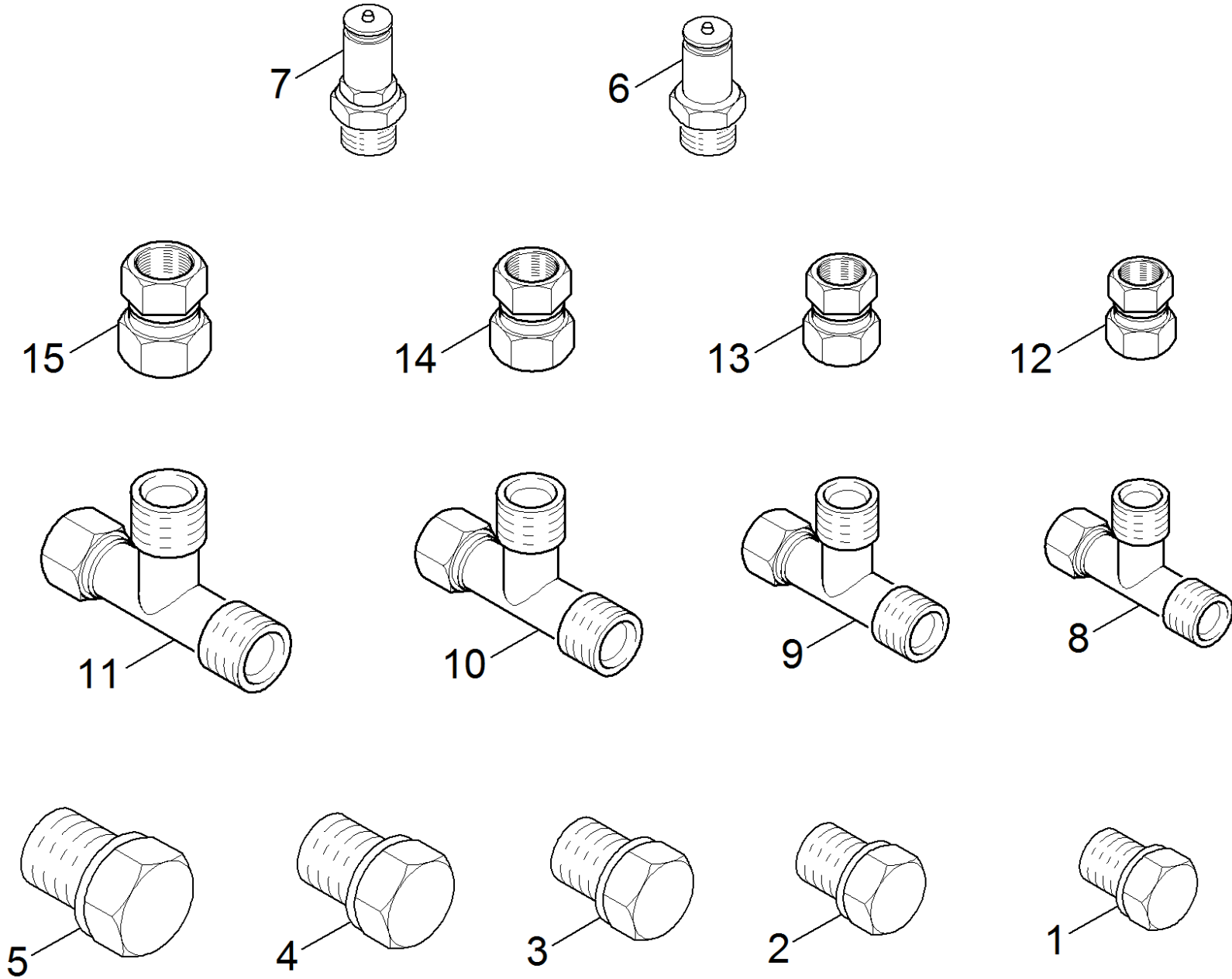
| POS | Artikelnr. | Beschreibung | Anzahl | Einheit |
|------------|-------------------|---------------------|---------------|----------------|
| 1 | 6.362-192.0 | O-Ring 85,32X 3,53 | 1.000 | ST |
| 2 | 6.025-059.0 | O-Ring 22x3,5mm | 1.000 | ST |





120 Schutzdach KM 150/500 R / KM 170/600 R (2.851-686.0)

| POS | Artikelnr. | Beschreibung | Anzahl | Einheit |
|-----|-------------|--------------------------------------|--------|---------|
| 4 | 7.312-104.0 | Kugelscheibe C13 -Edelstahl DIN 6319 | 27.000 | ST |
| 5 | 7.306-258.0 | Zyl.Schr. M12x50- 8.8-A3E ISO 4762 | 15.000 | ST |
| 6 | 7.306-231.0 | Zyl.Schr. M10x25-12.9-Dacro ISO 4762 | 4.000 | ST |
| 7 | 7.312-066.0 | Scheibe 10 -A2 ISO 7090 | 8.000 | ST |
| 8 | 7.311-441.0 | 6kt-Mutter M10-1.4305 ISO 10511 | 4.000 | ST |
| 9 | 7.306-080.0 | Zyl.Schr. M12x 30-8.8-A2E DIN 912 | 14.000 | ST |
| 10 | 7.312-054.0 | Scheibe 12-A2 ISO 7090 | 16.000 | ST |
| 11 | 7.311-026.0 | 6kt-Mutter M12-1.4305 ISO 10511 | 14.000 | ST |
| 41 | 7.312-104.0 | Kugelscheibe C13 -Edelstahl DIN 6319 | 18.000 | ST |
| 51 | 7.306-258.0 | Zyl.Schr. M12x50- 8.8-A3E ISO 4762 | 14.000 | ST |
| 61 | 7.306-231.0 | Zyl.Schr. M10x25-12.9-Dacro ISO 4762 | 3.000 | ST |
| 71 | 7.312-066.0 | Scheibe 10 -A2 ISO 7090 | 6.000 | ST |
| 81 | 7.311-441.0 | 6kt-Mutter M10-1.4305 ISO 10511 | 3.000 | ST |
| 91 | 7.306-080.0 | Zyl.Schr. M12x 30-8.8-A2E DIN 912 | 4.000 | ST |
| 101 | 7.312-054.0 | Scheibe 12-A2 ISO 7090 | 4.000 | ST |
| 111 | 7.311-026.0 | 6kt-Mutter M12-1.4305 ISO 10511 | 4.000 | ST |



130 Servicekit Hydraulik KM Industrial

| POS | Artikelnr. | Beschreibung | Anzahl | Einheit |
|-----|-------------|--------------------------|--------|---------|
| 1 | 6.963-047.0 | Verschlusskappe 1/4" | 1.000 | ST |
| 2 | 6.963-048.0 | Verschlusskappe 3/8" | 1.000 | ST |
| 3 | 6.963-049.0 | Verschlusskappe 1/2" | 1.000 | ST |
| 4 | 6.963-050.0 | Verschlusskappe 3/4" | 1.000 | ST |
| 5 | 6.963-051.0 | Verschlusskappe 1" | 1.000 | ST |
| 6 | 6.963-052.0 | Messkupplung G1/4" | 1.000 | ST |
| 7 | 6.963-053.0 | Messkupplung G1/2" | 1.000 | ST |
| 8 | 6.963-054.0 | T-Verschraubung 1/4" | 1.000 | ST |
| 9 | 6.963-055.0 | T-Verschraubung 3/8" | 1.000 | ST |
| 10 | 6.963-056.0 | T-Verschraubung 1/2" | 1.000 | ST |
| 11 | 6.963-057.0 | T-Verschraubung 3/4" | 1.000 | ST |
| 12 | 6.963-058.0 | Stutzen gerade 1/4" | 1.000 | ST |
| 13 | 6.963-059.0 | Stutzen gerade 3/8"-1/4" | 1.000 | ST |
| 14 | 6.963-060.0 | Stutzen gerade 1/2"-1/4" | 1.000 | ST |
| 15 | 6.963-061.0 | Stutzen gerade 3/4"-1/2" | 1.000 | ST |