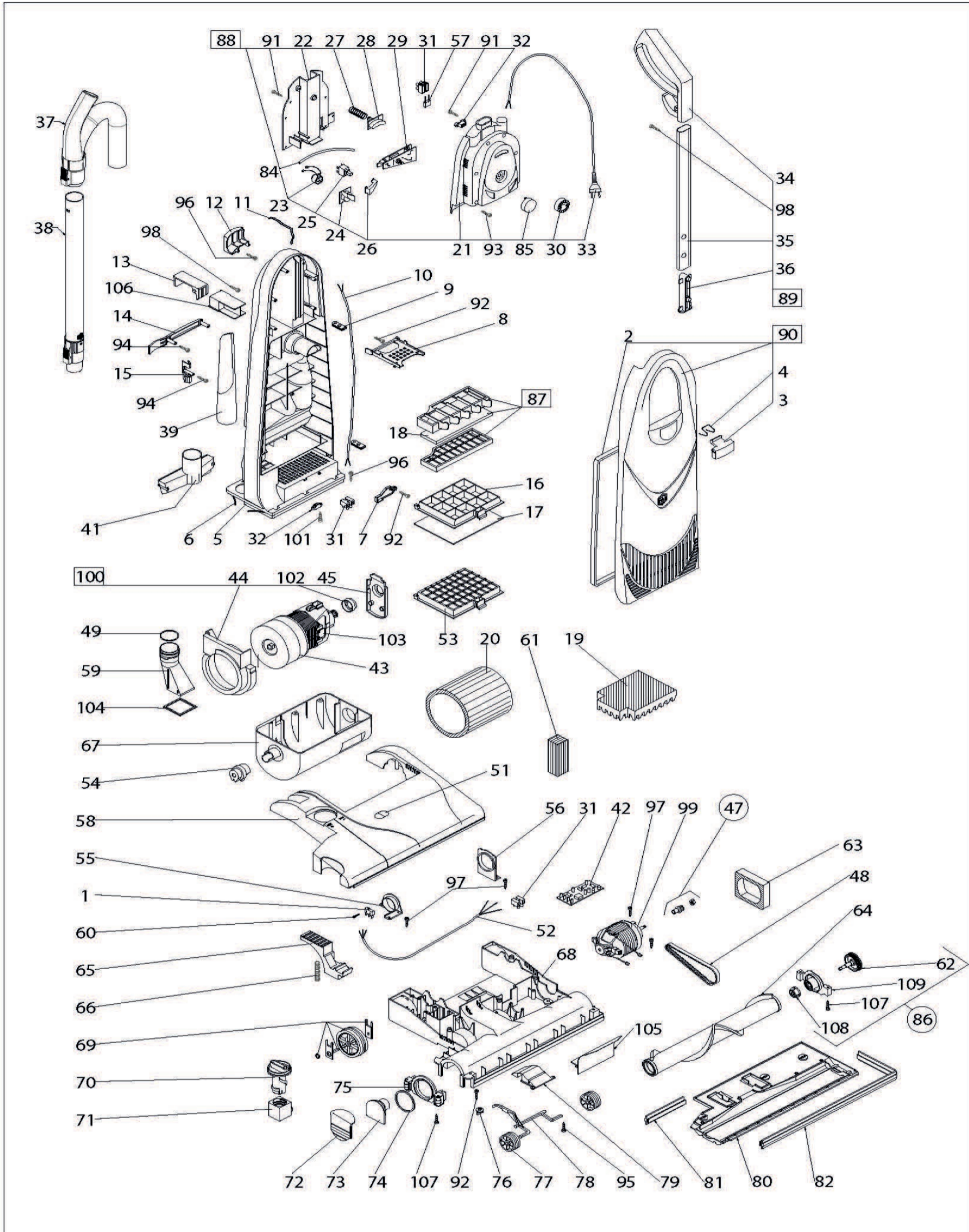


Ersatzteilliste Force 380 eco (219923)



Ersatzteilliste Force 380 eco (219923)

Pos.:	KatNr:	Bezeichnung:
1	234261	MICROSWITCH
2	234262	BAG DOOR GASKET
3	234263	BAG DOOR LATCH BLUE
4	234264	BAG DOOR SPRING
5	234265	BAG HOUSING DARK GREY
6	234266	BAG HOUSING GASKET
7	234267	EXHAUST GRILL HOOK
8	234268	BAG SAFETY SUPPORT
9	234269	STRAIN RELIEF KIT 2 PCS.
10	234270	INTERNAL CORD 2 WIRES WITH VACUUM SENSOR
10	234271	INTERNAL CORD 3 WIRES WITH VACUUM SENSOR
11	234272	ANTISTATIC SPRING
12	234273	HOSE SUPPORT
13	234274	CORD HOOK MEDIUM GREY
14	234275	TRANSPORT HANDLE
15	234276	ACCESSORY CLIP
16	234277	EXHAUST GRILL
17	234278	EXHAUST MICROFILTER 10 PCS
18	234279	MOTOR PROTECTION FILTER
19	234280	FOAM FILTER
20	234281	MOTOR FILTER
21	234282	ELECTRIC PANEL HOUSING
22	234283	ELECTRIC PANEL COVER
23	234284	VACUUM SENSOR WITH LIGHT
24	234285	RED LENS
25	234286	MAIN SWITCH
26	234287	SWITCH BUTTON
27	234288	HANDLE SPRING
28	234289	HANDLE BUTTON
29	234291	CIRCUIT BOARD V.230/240
30	234292	POWER ADJUSTING KNOB
31	234293	TERMINAL BLOCK 2 POLES
31	234294	TERMINAL BLOCK 3 POLES
32	234295	CORD CLAMP
33	234296	CORD.2x1 SCHUKO PLUG
34	234302	HANDLE GRIP BLUE
35	234303	CROMATE TUBE + HANDLE BUTTON
36	234304	HANDLE BUTTON ASSEMBLY 2 POS.
38	234305	TELESCOPIC WAND for DYNAMIC
39	234306	CREVICE TOOL
41	234307	UPHOLSTERY TOOL
42	234309	CIRCUIT BOARD 230/240V
43	234312	VACUUM MOTOR R26APSS (HE) V.240/50 W.750
44	234313	MOTOR GASKET
45	234314	BRUSH HOLDER GASKET WITH MOTOR BUSH
47	234315	PINION + NUT
48	234316	TIMING BELT 249 M7
49	234317	O'RING
51	234318	LENS SET RED/GREEN
52	234319	CORD 2 WIRES
52	234320	CORD 3 WIRES
54	234321	BUSH
55	234322	RIGHT SUPPORT DYNAMIC
55	234323	RIGHT SUPPORT DYNAMIC WITH MICROSWITCH
56	234324	LEFT SUPPORT
57	234325	RFI FILTER V.230
58	234326	BASE HOUSING COVER DYNAMIC 12"" WITH LENS
58	234327	BASE HOUSING COVER DYNAMIC 15"" WITH LENS
58	234328	BASE HOUSING COVER DYNAMIC 18"" WITH LENS
59	234329	CONVOYER TUBE
60	234330	SCREW 2,2x16 (WRAPPING OF 20 PCS)
61	234331	FILTER
62	234332	PULLEY
63	234333	MOTOR FILTER
64	234334	FOOT PEDAL RED
66	234335	FOOT PEDAL SPRING
67	234336	MOTOR HOUSING DARK GRAY
68	234337	BASE HOUSING 12"" DARK GRAY
68	234338	BASE HOUSING 18"" DARK GRAY
69	234339	REAR WHEEL ASSEMBLY

70	234340	ADJUSTING KNOB BLUE
71	234341	BRUSH ADJUSTER
72	234342	SIDE COVER BLUE
73	234343	ROLLER SUPPORT
74	234344	O'RING
75	234345	WHEELS SUPPORT
76	234346	WRAPPING OF 20 PCS ROLLER COVER CLIP
77	234347	FRONT WHEEL-NYLON SILVER GREY
78	234348	FRONT AXLE
79	234349	CHANNEL COVER
80	234351	ROLLER COVER 38 (15''')
81	234353	BACK BUMPER 38 (15''') BLUE
82	234356	FRONT BUMPER 38 (15''') BLUE
84	234358	RUBBER TUBE
85	234359	EL.PANEL CAP
86	234360	TRANSMISSION SUPPORT W/ PULLEY
87	234361	COMPLETE GRILL
88	234362	ELECTRIC PANEL CPL.V.230/50 SCHUKO PLUG
89	234369	HANDLE TUBE ASSEMBLY BLUE
90	234370	BAG DOOR ASSEMBLY LIGHT GREY (ecoFORCE)
91	234371	SCREW 2,9x19 (WRAPPING OF 20 PCS)
92	234372	SCREW 3,5x9,5 TG (WRAPPING OF 20 PCS)
93	234373	SCREW 3,5x25 (WRAPPING OF 20 PCS)
94	234374	SCREW 3,9x16 (WRAPPING OF 20 PCS)
95	234375	WRAPPING OF 20 PCS SCREW 4,8x13 TG
96	234376	SCREW 3,5x32 (WRAPPING OF 20 PCS)
97	234377	SCREW 3,9x19 (WRAPPING OF 20 PCS)
98	234378	SCREW 3,9x13 (WRAPPING OF 20 PCS)
99	234379	BRUSH MOTOR 240V 300-380 (12'''-15''')
100	234380	KIT MOTOR GASKET
101	234381	SCREW 2,9x16 (WRAPPING OF 20 PCS)
102	234382	BUSH MOTOR
103	234383	THERMAL PROTECTOR V.240 ACTIVA ESO
104	234384	CONVEJOR GASKET
105	234385	CONVEJOR
106	234386	SPACER CORD HOOK
107	234387	SCREW 3,9x25 (WRAPPING OF 20 PCS)
108	234388	DRIVE JOINT BASE
109	234389	TRANSMISSION SUPPORT WITHOUT PULLEY