

# Tiger-Vac®

CE 0081 Ex II 1/3 D  
Ex tc IIIC T200°C Dc IP6X  
c T3  
LCIE 15 ATEX 3061

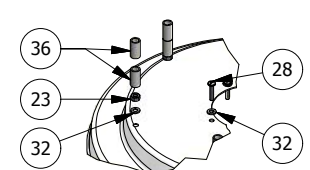
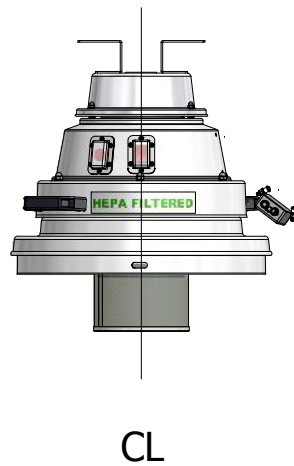
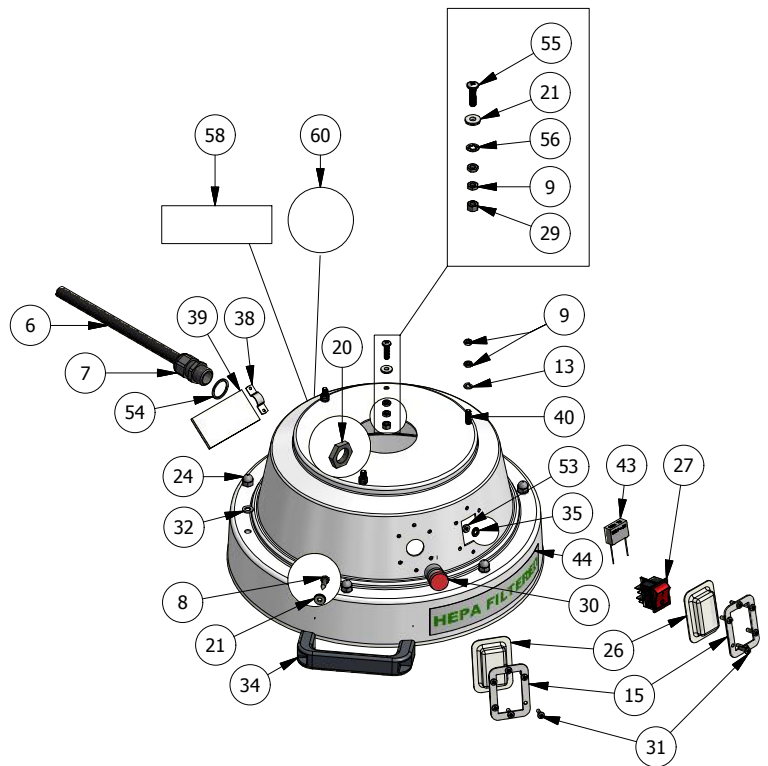
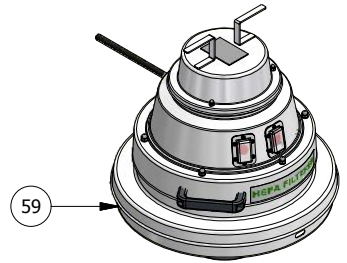
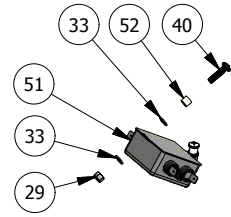
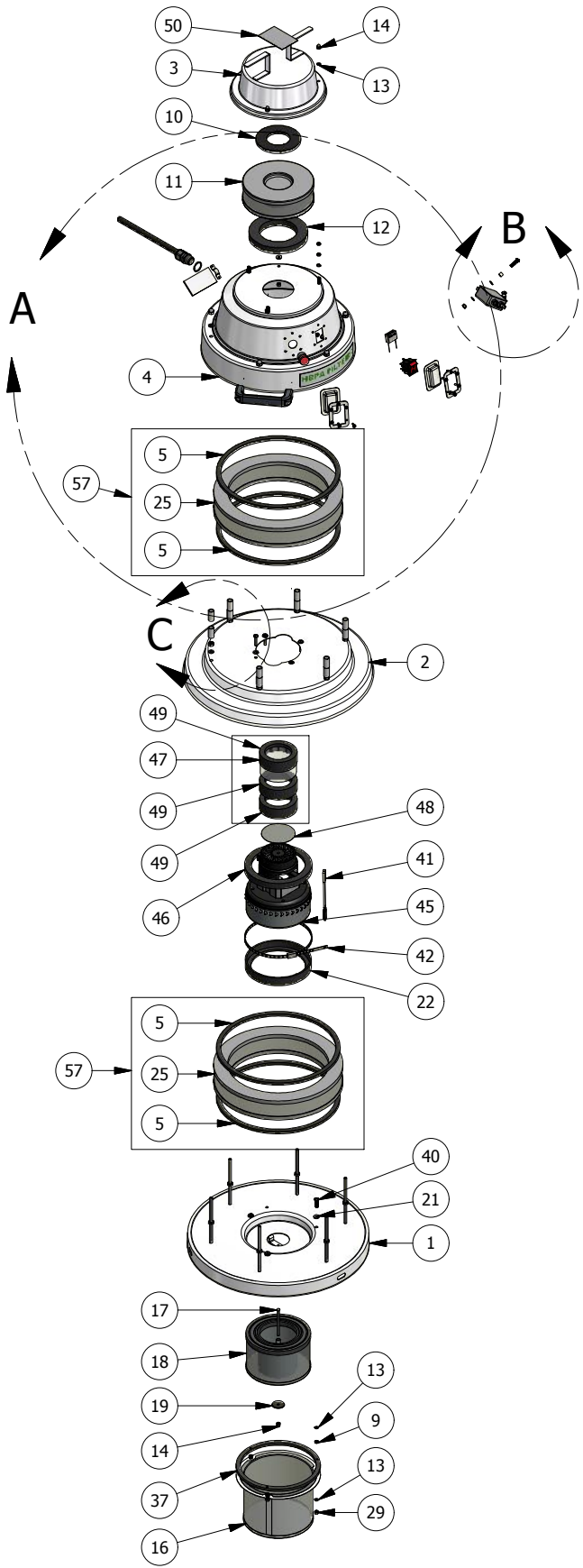
C-10 EX 2+2W 240V

Ex tc IIIC T200°C Dc IP6X  
IECEx LCIE 15.0048



# Tiger-Vac®

POWERHEAD MODEL C-10 EX (2+2) (2+2MR) (DT) (4W) 240V





POWERHEAD MODEL C-10 EX (2+2) (2+2MR) (DT) (4W) 240V

PARTS LIST

ITEM	PART NUMBER	DESCRIPTION	QTY
1	215375-T3B	SPECIAL LID W/ 3 HOLES FOR HEAP CAGE PROTECTION FOR BL-SD-IP6X, POWDER COATED	1
2	215376B	LOWER MOTOR HOUSING FOR ATEX-XXE, CRS, POWDER COATED	1
3	215378-01B	HEPA HOUSING WITH CABLE HOLDER FOR BL-SD-IP6X, POWDER COATED HAMMERTONE GRAY A-9	1
4	215377-01B	SPECIAL UPPER MOTOR HOUSING FOR BL-SD-IP6X, POWDER COATED HAMMERTONE GRAY A-9	1
5	SUP022-34	1/4" x 3/4" CELLULAR URETHANE STRIP GASKET WITH ADHESIVE BACKING /FT (34" LONG)	4
6	212857	EUROPEAN POWER CABLE, BLACK OIL RESISTANT (NOT ARMoured) 3 x 1.5mm, FOR EXP1- / METER	10M
7	218994B	M20 GLAND LONG THREAD, IECEX & ATEX CERTIFIED Ex e II 2 G Ex II / Ex 2 d Ex tD A21	1
8	211763A	SHEET METAL SCREW, PAN HEAD PHILLIP, #10 x 3/4, ZINC PLATED	4
9	211473	HEX JAM NUT, M5, SS	11
10	211281N	GASKET, WHITE NITRILE, 1/4" X 4.25" OD X 2-5/8" ID, MOTOR COOLING AIR	1
11	211854	HEPA FILTER, 2" HIGH, 99.99% EFFICIENCY ON 0.3 MICRON, WITH GASKET	1
12	211027G	GASKET FOR HEPA/ULPA FILTER, 3/4" NEOPRENE SPONGE SC41, 5-1/4 OD X 3-3/8 ID	1
13	211093	SPRING WASHER, M5, SS	12
14	211131	ACORN HEX NUT, M5 SS	4
15	211698	FRAME FOR SWITCH BOOT,S/S	2
16	217859B	PROTECTION HOUSING (INTERNAL) FOR HEPA FILTER #212304B, CRS, POWDER COATED	1
17	217512	HEX BOLT M5 x 70	1
18	212304B-HD	HEPA FILTER, 99.99% EFFICIENCY ON 0.3 MICRON, HEAVY DUTY CONSTRUCTION	1
19	214554	BONDED SEALING WASHER, SCREW SIZE; #10, 1-1/8" OD, GALVANISED STEEL	1
20	218996	M20 LOCKNUT	1
21	211545	SEAL WASHER, #10 (BARTITE)	8
22	211194D	LOWER MOTOR GASKET, 13mm THICK	1
23	211172	HEX NUT, 1/4"-20 S/S	6
24	213842	ACORN NUT 1/4"-20 S/S	6
25	215372M	HEPA FILTER NO GASKETS 99.99% ON 0.3 MICRON, 11.522"OD x 9.066"ID x 2"HIGH (AS RECEIVED FROM CF)	2
26	211573	SEAL EXTERNAL (SWITCH BOOT)	2
27	211352	SWITCH, 2POLE, 1THROW	1
28	211129	BOLT, M5 x 25, S/S	4
29	211092	HEX NUT, M5, SS	6
30	216910B	FILTER BLOCKAGE MONITORING DEVICE FOR 230V MODELS	1
31	211699A	BOLT 6-32 x 1/2" VIS A MACHINE-TETE ROND PHILIPS S/S	12
32	211074	FLAT WASHER, M6, SS	16
33	211085	FLAT WASHER, M5, SS	4
34	211203T-SD	HANDLE FOR CURVED SURFACE, STATIC DISSIPATIVE PLASTIC (BLACK)	2
35	211587	SEAL WASHER # 8 (BARTITE)	12
36	211830	PLASTIC SPACER 1/2"OD x 3/8"ID x 1"LG	12
37	SUP022	1/4" x 3/4" CELLULAR URETHANE STRIP GASKET WITH ADHESIVE BACKING /FT	2'
38	SUP116	CABLE HOLDER (SANGLES POUR CABLE) FOR 3/16" DIA CABLE	1
39	211767	ELECTRICAL KIT NO.4	1
40	211158	BOLT, PAN PHILLIPS, M5 X 20, S/S	8
41	211210	THERMO PROTECTOR (KLIXON)	1
42	SUP303	STAINLESS STEEL TIES WITH BALL LOCKING MECHANISM	1
43	211090N	CAPACITOR RIFA	1
44	212630	STICKER "HEPA FILTERED" GREEN ON REFLECTIVE	1
45	213285	MOTOR BYPASS (A210) 220-240V 50/60Hz FOR MODELSC AS-400 & C-10 EX	1
46	212325	LOWER MOTOR GASKET FOR AS-5 / UPPER MOTOR GASKET FOR CWR-8/10/15 240V	1
47	215384M	GUIDE TUBE 3.25" OD X 3" ID X 1.75" LENGHT, FOR COOLING AIR INTAKE, FOR MODEL ATEX 22E	1
48	213090	ROUND SCREEN 3" S/S	1
49	213618C	GASKET, 3/32" (2.5 MM) THICK, HARD RUBBER, FOR COOLING AIR INTAKE	3
50	NAMEPLATE		1



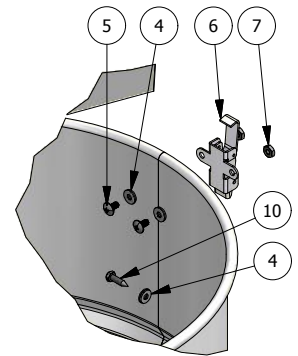
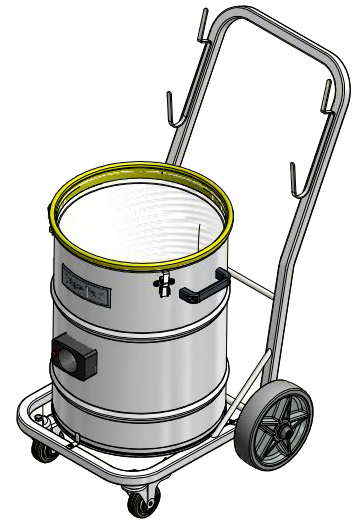
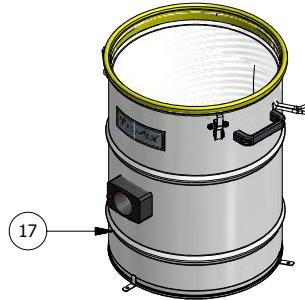
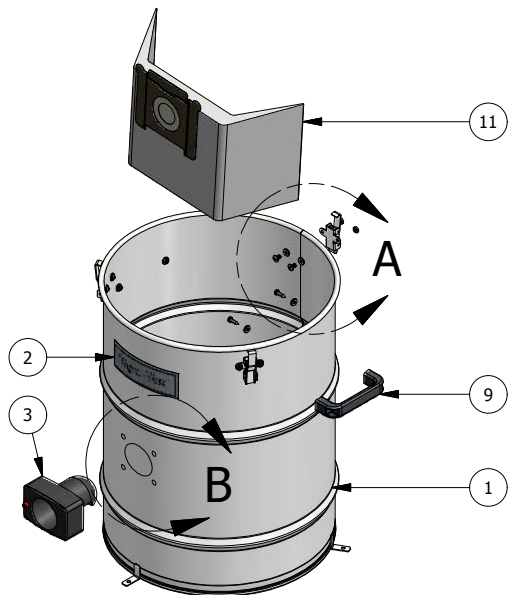
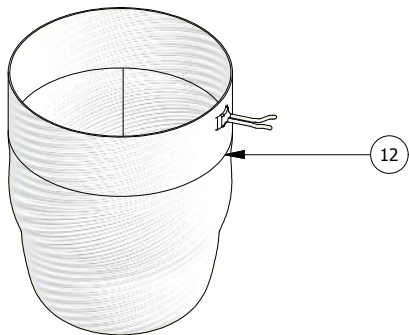
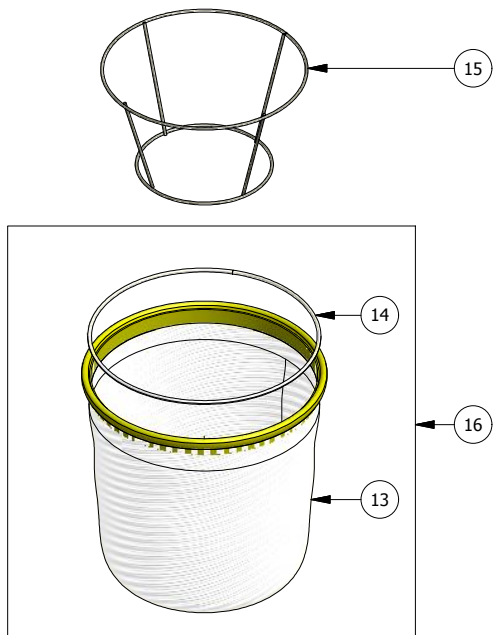
POWERHEAD MODEL C-10 EX (2+2) (2+2MR) (DT) (4W) 240V

PARTS LIST

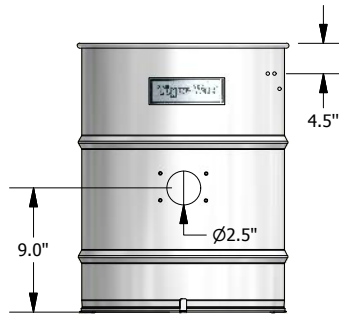
ITEM	PART NUMBER	DESCRIPTION	QTY
51	211217B	EMI FILTER ONLY, DELTA ELECTRONIC 10DKAG5	1
52	211759	SPACER BUSHING FOR #10 SCREW	2
53	211699B	HEX NUT 6-32 STAINLESS STEEL	12
54	218998	M20 SEALING GASKET	1
55	213948	TRUSS HEAD PHILLIPS MACHINE SCREW, 10-32 THREAD, 3/4" LENGTH, 18-8 SS (GREEN PAINTED)	1
56	211093B	LOCK WASHER, INTERNAL TOOTH, M5, SS	1
57	215372	HEPA FILTER WITH GASKETS ON BOTH SIDES, 99.99% ON 0.3 MICRON, 11.522" OD x 9.066" ID x 2" HIGH	2
58	211660	WARNING STICKER "USE INDOORS ONLY" REFLECTIVE MATERIAL	1
59	215382B	POWERHEAD ASSEMBLY FOR MODEL C-10EX ATEX CATEGORY 3, 230-240V 50/60Hz, SINGLE PHASE	1
60	211271	STICKER "MADE IN CANADA"	1

# Tiger-Vac®

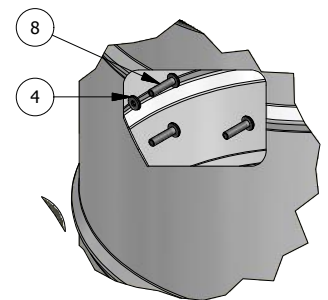
TANK ASSEMBLY (2+2W) DRY ONLY



DETAIL A



DETAIL



DETAIL B



TANK ASSEMBLY (2+2W) DRY ONLY

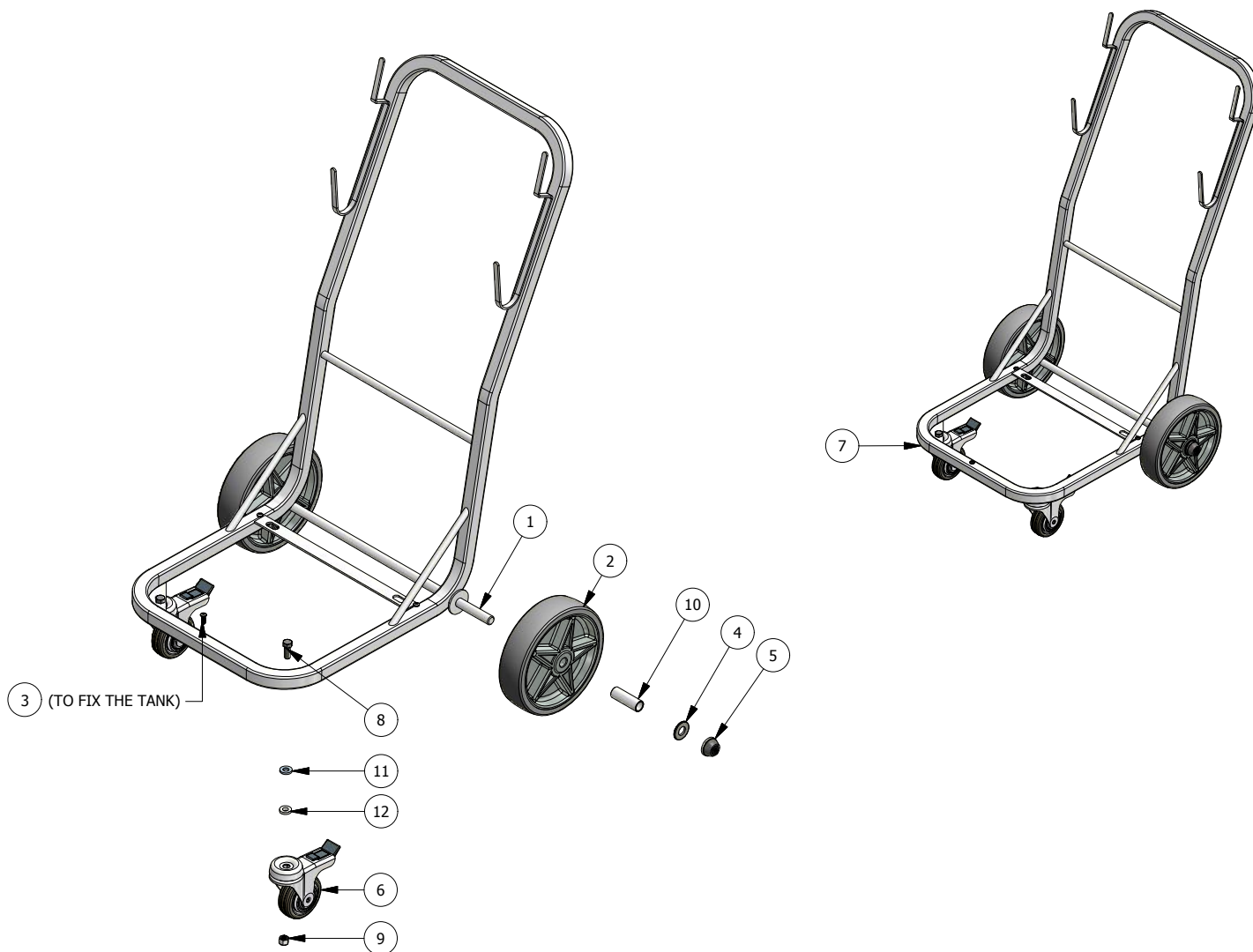
PARTS LIST

ITEM	PART NUMBER	DESCRIPTION	QTY
1	211551AWB2	DRUM 55L WITH 3 BRACKETS WELDED, STAINLESS STEEL AISI 430	1
2	211127	LOGO STICKER - TIGER-VAC	1
3	219530	SUCTION INLET ASSEMBLY, 60mm, STATIC CONDUCTIVE PLASTIC (CONSISTS OF 3 PIECES) 90 DEGREES TOWARD THE BOTTOM	1
4	211545	SEAL WASHER, #10 (BARTITE)	14
5	214375	TRUSS HEAD PHILLIPS MACHINE SCREW, 10-32 THREAD, 3/8" LENGTH, 18-8 SS	6
6	211515	LATCH, STAINLESS STEEL (TIGER-VAC)	3
7	213792	HEX NUT, 10-32, S/S	6
8	219534	SCREW FOR SUCTION INLET PAT TMT PHL M5 x 30	4
9	211203T-SD	HANDLE FOR CURVED SURFACE, STATIC DISSIPATIVE PLASTIC (BLACK)	2
10	211763A	SHEET METAL SCREW, PAN HEAD PHILLIP, #10 x 3/4, ZINC PLATED	4
11	212994A-SD	COLLECTION BAG MADE OF CONDUCTIVE MATERIAL	1
12	212100S	CONDUCTIVE POLY LINER WITH DRAW STRING, 40 LITRES (10 GALLONS)	1
13	219045A	MAIN FILTER ONLY SD* FOR C-10 EX VACS WITH 4 LACES FOR WHITE FILTER CAGE	1
14	211146	RING FOR FILTER, 15", GALVANIZED	1
15	212727B	CAGE FOR CLOTH FILTER, 13.5" OD TOP X 9" OD BOTTOM X 7.75" H, POWDER COATED	1
16	219046A	MAIN FILTER ASSEMBLY SD* FOR C-10 EX VACS WITH 4 LACES FOR WHITE FILTER CAGE (CAGE SOLD SEPARATELY)	1
17	211551-01	RECOVERY TANK #211551AWB (40L. SAE 430) ASSEMBLY FOR (2+2W) DRY ONLY, INCLUDES FILTERS, NO CARRIAGE	1



# Tiger-Vac®

TANK ASSEMBLY (2+2W) DRY ONLY



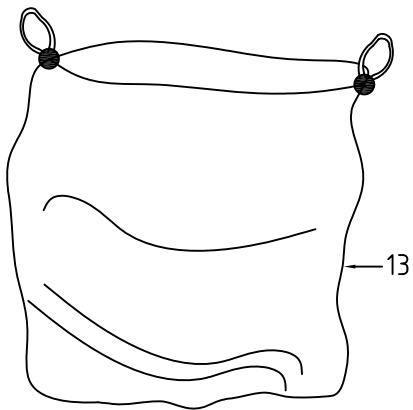
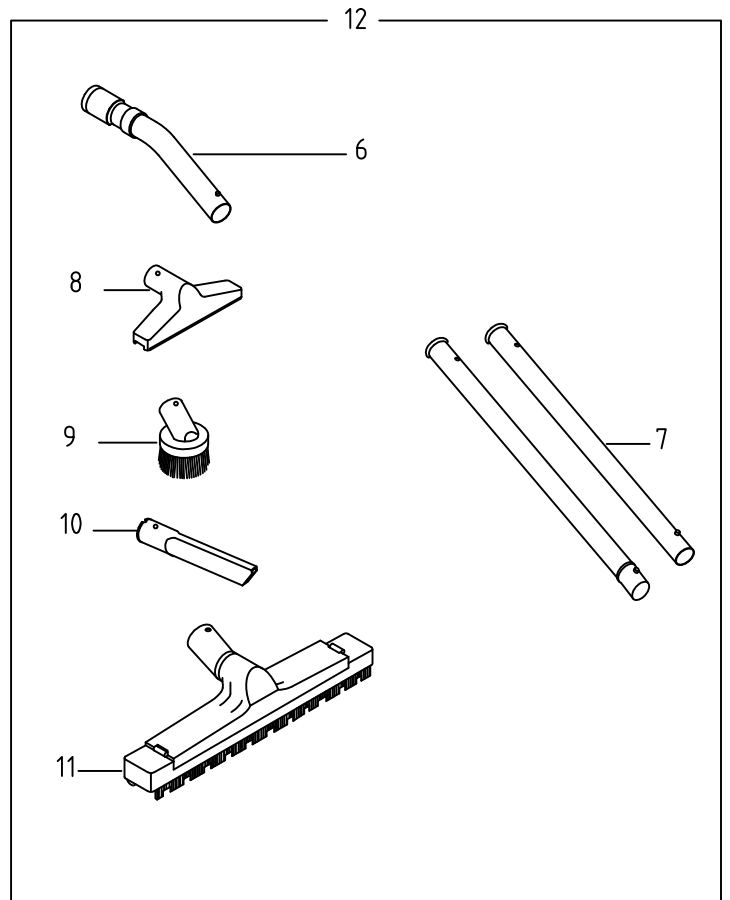
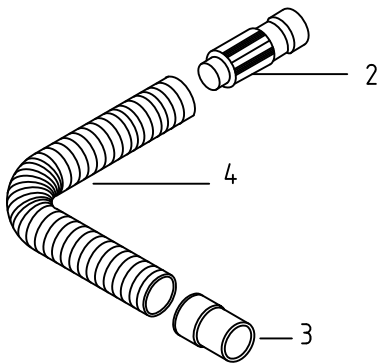
## PARTS LIST

ITEM	PART NUMBER	DESCRIPTION	QTY
1	219401B	SQUARE TUBE FRAME, HAMMERTONE GRAY A-9	1
2	217882	WHEEL 8" (200mm) CONDUCTIVE, BLACK RUBBER	2
3	211050	BOLT, PAN PHILLIPS, M5 x 16, S/S	3
4	215956	DOWEL FOR REAR WHEEL FOR AVSD-35 & AV-35	2
5	215954	CAP FOR REAR WHEEL FOR AVSD-35 & AV-35	2
6	216505A	CONDUCTIVE WHEEL 2.5", GREY, WITH ZINC PLATED STEEL FRAME, WITH TOTAL BRAKE	2
7	215951A	2+2W CARRIAGE FRAME ASSEMBLY WITH CONDUCTIVE WHEELS FOR MODEL C-10 EX	1
8	214090	HEX BOLT 3/8"-16 X 1", ZINC PLATED	2
9	212993A	HEX NUT 3/8", STAINLESS STEEL WITH NYLON	2
10	217882-02	BUSHING; 0.795" OD X 0.627" ID, 2.328" LG TO USE WITH AXEL 5/8" FOR WHEEL 8" (200mm) CONDUCTIVE WHEEL	2
11	213784	FLAT WASHER 3/8" S/S	2
12	216506	ZAMAK WASHER FOR 60mm NYLON WHEEL, D.20 H.10	2

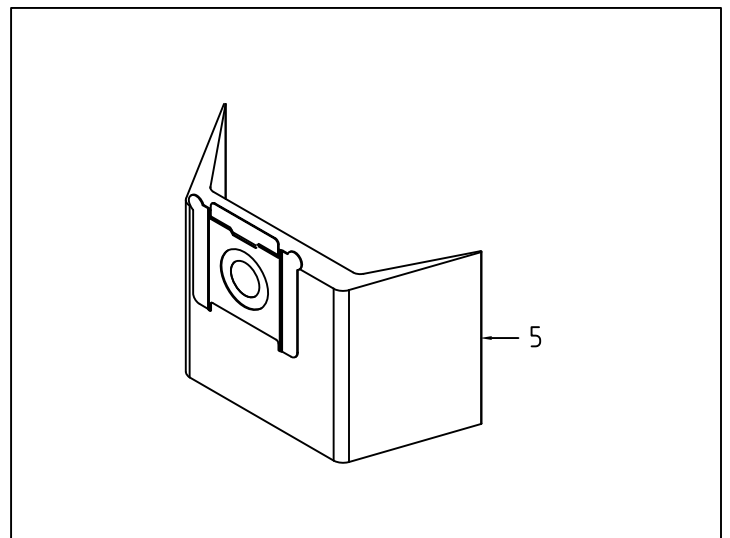
# Tiger-Vac<sup>®</sup>

TOOL KIT FOR MODEL C-10 EX (2+2W)

1  
STATIC CONDUCTIVE  
SUCTION HOSE  
1 1/2" x 10' (38mm x 3m)



OPTIONAL





# TIGER-VAC

## PARTS LIST FOR:

TOOL KIT FOR MODEL C-10 EX (2+2W)

ITEM#	PART#	DESCRIPTION	QTY
1	383440D	STATIC CONDUCTIVE CRUSHPROOF SUCTION HOSE ASMBLY (NO WIRE) 1.5" x10' FOR USE w/60mm CONDUCTIVE IN	1
2	500700	RIGID HOSE CUFF 60/38mm (MACHINE SIDE), MADE OF STATIC CONDUCTIVE PLASTIC	1
3	383437	SWIVEL HOSE CUFF, Ø1.5" (Ø38mm), STATIC CONDUCTIVE, BLACK	1
4	383438	CRUSHPROOF SUCTION HOSE, STATIC CONDUCTIVE (NO WIRE), Ø1.5" (Ø38mm), , /FT	10'
5	212994-SD	COLLECTION BAGS MADE OF CONDUCTIVE MATERIAL (PACKAGE OF 3)	1
6	381208	CURVED HANDLE, Ø1.5" TO Ø1.25" (Ø38mm TO Ø32mm), CHROME	1
7	323315	EXTENSION WANDS, Ø1.25" (Ø32MM), (SET OF 2), CHROME	1
8	323314A	UPHOLSTERY FLAT TOOL, Ø1.25" (Ø32mm), ESD SAFE PLASTIC	1
9	323312A	ROUND BRUSH, Ø1.25" (Ø32mm), ESD SAFE PLASTIC	1
10	323313A	CREVICE TOOL, Ø1.25" (Ø32mm), ESD SAFE PLASTIC	1
11	323318A	UTILITY FLOOR TOOL, Ø1.25"(Ø32mm) x 12"(30cm), STATIC CONDUCTIVE PLASTIC w/CONDUCTIVE NYLON BRISTLES	1
12	323284	TOOL KIT FOR MODEL ATEX-22E	1
13	212100S	CONDUCTIVE POLY LINER WITH DRAW STRING, 40 LITRES (10 GALLONS)	OPT